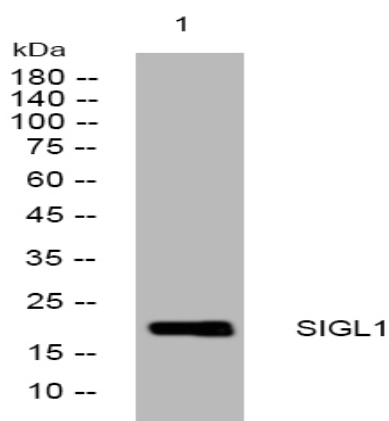


SIGL1 rabbit pAb

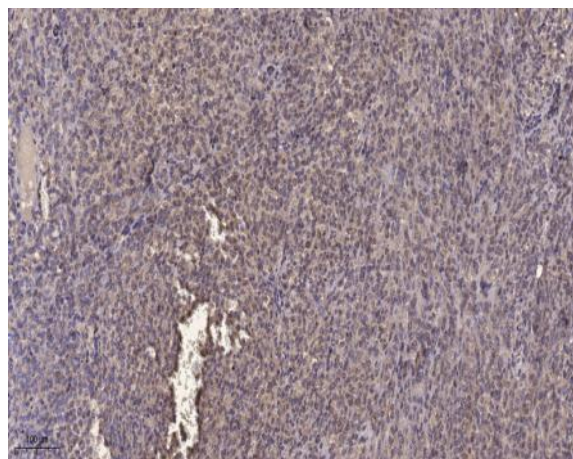
Catalog No :	YT6395
Reactivity :	Human
Applications :	WB;IHC
Target :	SIGL1
Gene Name :	SIGLECL1 C19orf75
Protein Name :	SIGL1
Human Gene Id :	284369
Human Swiss Prot No :	Q8N7X8
Immunogen :	Synthesized peptide derived from human SIGL1 AA range: 82-132
Specificity :	This antibody detects endogenous levels of SIGL1 at Human
Formulation :	Liquid in PBS containing 50% glycerol, 0.5% BSA and 0.02% sodium azide.
Source :	Polyclonal, Rabbit,IgG
Dilution :	WB 1:500-2000;IHC 1:50-300
Purification :	The antibody was affinity-purified from rabbit antiserum by affinity-chromatography using epitope-specific immunogen.
Concentration :	1 mg/ml
Storage Stability :	-15 °C to -25 °C/1 year(Do not lower than -25 °C)
Molecularweight :	22kD
Subcellular Location :	Membrane ; Single-pass membrane protein .

Sort : 16331**No4 :** 1**Host :** Rabbit**Modifications :** Unmodified

Products Images



Western blot analysis of lysates from U2OS cells, primary antibody was diluted at 1:1000, 4° over night



Immunohistochemical analysis of paraffin-embedded human Colon cancer. 1, Antibody was diluted at 1:200(4° overnight). 2, Tris-EDTA,pH9.0 was used for antigen retrieval. 3,Secondary antibody was diluted at 1:200(room temperature, 45min).