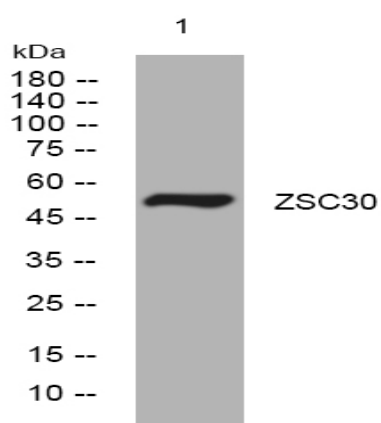


ZSC30 rabbit pAb

Catalog No :	YT6390
Reactivity :	Human
Applications :	WB
Target :	ZSC30
Gene Name :	ZSCAN30 ZNF397OS
Protein Name :	ZSC30
Human Gene Id :	100101467
Human Swiss Prot No :	Q86W11
Immunogen :	Synthesized peptide derived from human ZSC30 AA range: 173-223
Specificity :	This antibody detects endogenous levels of ZSC30 at Human
Formulation :	Liquid in PBS containing 50% glycerol, 0.5% BSA and 0.02% sodium azide.
Source :	Polyclonal, Rabbit,IgG
Dilution :	WB 1[?]500-2000
Purification :	The antibody was affinity-purified from rabbit antiserum by affinity-chromatography using epitope-specific immunogen.
Concentration :	1 mg/ml
Storage Stability :	-15°C to -25°C/1 year(Do not lower than -25°C)
Molecularweight :	54kD
Function :	function:May be involved in transcriptional regulation.,similarity:Belongs to the krueppel C2H2-type zinc-finger protein family.,similarity:Contains 1 SCAN box domain.,similarity:Contains 7 C2H2-type zinc fingers.,

Subcellular Location :	Nucleus .
Sort :	24790
No4 :	1
Host :	Rabbit
Modifications :	Unmodified

Products Images



Western blot analysis of lysates from HpeG2 cells, primary antibody was diluted at 1:1000, 4° over night