

KR221 rabbit pAb

Catalog No :	YT6389
Reactivity :	Human
Applications :	IHC;IF
Target :	KR221
Gene Name :	KRTAP22-1 KAP22.1
Protein Name :	KR221
Human Gene Id :	337979
Human Swiss Prot No :	Q3MIV0
Immunogen :	Synthesized peptide derived from human KR221 AA range: 1-24
Specificity :	This antibody detects endogenous levels of KR221 at Human
Formulation :	Liquid in PBS containing 50% glycerol, 0.5% BSA and 0.02% sodium azide.
Source :	Polyclonal, Rabbit,IgG
Dilution :	IHC 1:50-200. IF 1:50-200
Purification :	The antibody was affinity-purified from rabbit antiserum by affinity-chromatography using epitope-specific immunogen.
Concentration :	1 mg/ml
Storage Stability :	-15°C to -25°C/1 year(Do not lower than -25°C)
Molecularweight :	5kD
Function :	function:In the hair cortex, hair keratin intermediate filaments are embedded in an interfilamentous matrix, consisting of hair keratin-associated proteins (KRTAP), which are essential for the formation of a rigid and resistant hair shaft

through their extensive disulfide bond cross-linking with abundant cysteine residues of hair keratins. The matrix proteins include the high-sulfur and high-glycine-tyrosine keratins.,subunit:Interacts with hair keratins.,

Subcellular Location :

intermediate filament,

Sort :

8993

No4 :

1

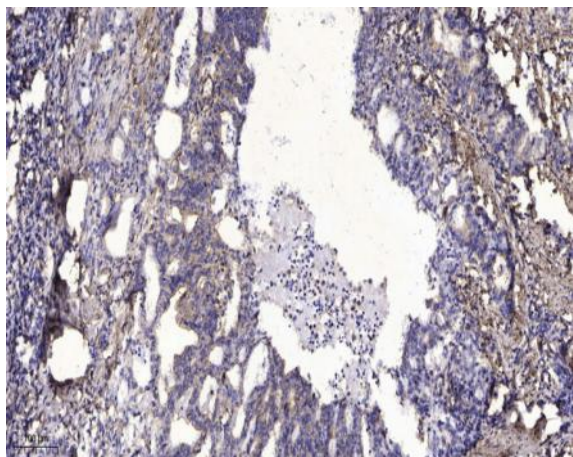
Host :

Rabbit

Modifications :

Unmodified

Products Images



Immunohistochemical analysis of paraffin-embedded human Gastric adenocarcinoma. 1, Antibody was diluted at 1:200(4° overnight). 2, Tris-EDTA,pH9.0 was used for antigen retrieval. 3,Secondary antibody was diluted at 1:200(room temperature, 45min).