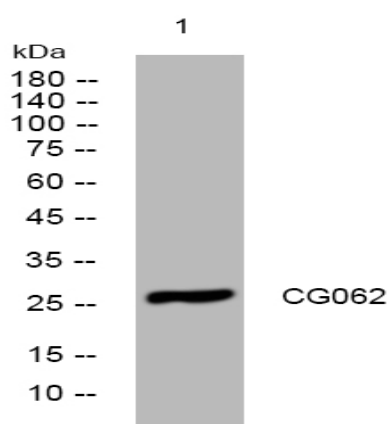


CG062 rabbit pAb

Catalog No :	YT6388
Reactivity :	Human;Mouse;Rat
Applications :	WB
Target :	CG062
Gene Name :	C7orf62
Protein Name :	CG062
Human Gene Id :	219557
Human Swiss Prot No :	Q8TBZ9
Mouse Gene Id :	70920
Mouse Swiss Prot No :	Q9D5W8
Rat Gene Id :	499993
Rat Swiss Prot No :	A0JPP5
Immunogen :	Synthesized peptide derived from human CG062 AA range: 59-109
Specificity :	This antibody detects endogenous levels of CG062 at Human/Mouse/Rat
Formulation :	Liquid in PBS containing 50% glycerol, 0.5% BSA and 0.02% sodium azide.
Source :	Polyclonal, Rabbit,IgG
Dilution :	WB 1:500-2000
Purification :	The antibody was affinity-purified from rabbit antiserum by affinity-chromatography using epitope-specific immunogen.

Concentration :	1 mg/ml
Storage Stability :	-15°C to -25°C/1 year(Do not lower than -25°C)
Molecularweight :	28kD
Expression :	Testis-specific.
Sort :	3911
No4 :	1
Host :	Rabbit
Modifications :	Unmodified

Products Images



Western blot analysis of lysates from HpeG2 cells, primary antibody was diluted at 1:1000, 4° over night