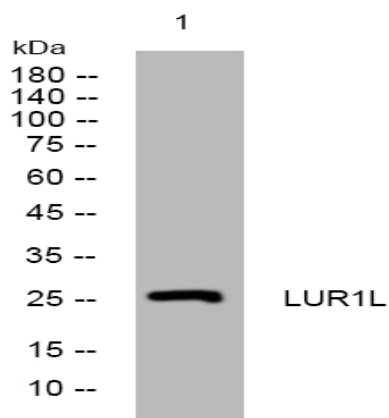


LUR1L rabbit pAb

Catalog No :	YT6385
Reactivity :	Human;Mouse;Rat
Applications :	WB
Target :	LUR1L
Gene Name :	LURAP1L C9orf150 HYST0841
Protein Name :	LUR1L
Human Gene Id :	286343
Human Swiss Prot No :	Q8IV03
Mouse Gene Id :	52829
Mouse Swiss Prot No :	Q8K2P1
Rat Gene Id :	362535
Rat Swiss Prot No :	Q5BJW5
Immunogen :	Synthesized peptide derived from human LUR1L AA range: 142-192
Specificity :	This antibody detects endogenous levels of LUR1L at Human/Mouse/Rat
Formulation :	Liquid in PBS containing 50% glycerol, 0.5% BSA and 0.02% sodium azide.
Source :	Polyclonal, Rabbit,IgG
Dilution :	WB 1:500-2000
Purification :	The antibody was affinity-purified from rabbit antiserum by affinity-chromatography using epitope-specific immunogen.

Concentration :	1 mg/ml
Storage Stability :	-15°C to -25°C/1 year(Do not lower than -25°C)
Molecularweight :	25kD
Function :	polymorphism:The poly-Gly region is polymorphic and the number of Gly varies in the population (from 9 to 12).,
Sort :	9293
No4 :	1
Host :	Rabbit
Modifications :	Unmodified

Products Images



Western blot analysis of lysates from 3T3 cells, primary antibody was diluted at 1:1000, 4° over night