

QCR9 rabbit pAb

| | |
|------------------------------|--|
| Catalog No : | YT6379 |
| Reactivity : | Human;Mouse |
| Applications : | IHC;IF |
| Target : | QCR9 |
| Fields : | >>Oxidative phosphorylation;>>Metabolic pathways;>>Cardiac muscle contraction;>>Thermogenesis;>>Non-alcoholic fatty liver disease;>>Alzheimer disease;>>Parkinson disease;>>Amyotrophic lateral sclerosis;>>Huntington disease;>>Prion disease;>>Pathways of neurodegeneration - multiple diseases;>>Chemical carcinogenesis - reactive oxygen species;>>Diabetic cardiomyopathy |
| Gene Name : | UQCR10 UCRC HSPC119 |
| Protein Name : | QCR9 |
| Human Gene Id : | 29796 |
| Human Swiss Prot No : | Q9UDW1 |
| Mouse Gene Id : | 66152 |
| Mouse Swiss Prot No : | Q8R1I1 |
| Immunogen : | Synthesized peptide derived from human QCR9 AA range: 9-59 |
| Specificity : | This antibody detects endogenous levels of QCR9 at Human/Mouse |
| Formulation : | Liquid in PBS containing 50% glycerol, 0.5% BSA and 0.02% sodium azide. |
| Source : | Polyclonal, Rabbit,IgG |
| Dilution : | IHC 1:50-200. IF 1:50-200 |
| Purification : | The antibody was affinity-purified from rabbit antiserum by affinity- |

chromatography using epitope-specific immunogen.

Concentration : 1 mg/ml

Storage Stability : -15°C to -25°C/1 year (Do not lower than -25°C)

Molecularweight : 7kD

Background : UCRC is a subunit of mitochondrial complex III (ubiquinol-cytochrome c reductase; EC 1.10.2.2), which forms the middle segment of the respiratory chain of the inner mitochondrial membrane (Schagger et al., 1995 [PubMed 8592474]). [supplied by OMIM, Mar 2008],

Function : caution: The sequence shown here is derived from an Ensembl automatic analysis pipeline and should be considered as preliminary data., function: This is a component of the ubiquinol-cytochrome c reductase complex (complex III or cytochrome b-c1 complex), which is part of the mitochondrial respiratory chain. This subunit interacts with cytochrome c1., similarity: Belongs to the UQCRC1/QCR9 family., subunit: The bc1 complex contains 11 subunits: 3 respiratory subunits (cytochrome b, cytochrome c1 and Rieske/UQCRC1), 2 core proteins (UQCRC1/QCR1 and UQCRC2/QCR2) and 6 low-molecular weight proteins (UQCRC3/QCR6, UQCRC4/QCR7, UQCRC5/QCR8, UQCRC6/QCR9, UQCRC7/QCR10 and a cleavage product of Rieske/UQCRC1).,

Subcellular Location : Mitochondrion inner membrane ; Single-pass membrane protein .

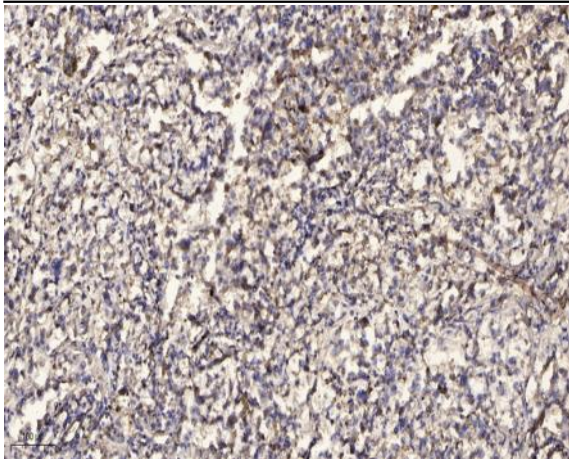
Sort : 13200

No4 : 1

Host : Rabbit

Modifications : Unmodified

Products Images



Immunohistochemical analysis of paraffin-embedded human Squamous cell carcinoma of lung. 1, Antibody was diluted at 1:200(4° overnight). 2, Tris-EDTA,pH9.0 was used for antigen retrieval. 3,Secondary antibody was diluted at 1:200(room temperature, 45min).