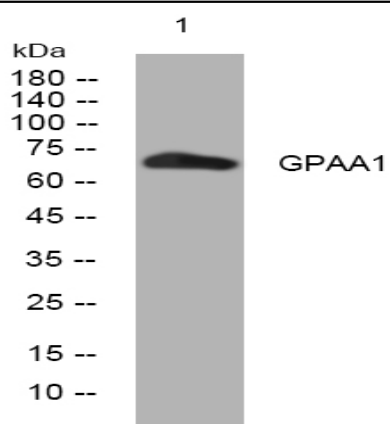


GPAA1 rabbit pAb

Catalog No :	YT6378
Reactivity :	Human;Mouse
Applications :	WB
Target :	GPAA1
Fields :	>>Glycosylphosphatidylinositol (GPI)-anchor biosynthesis;>>Metabolic pathways
Gene Name :	GPAA1 GAA1
Protein Name :	GPAA1
Human Gene Id :	8733
Human Swiss Prot No :	O43292
Mouse Gene Id :	14731
Mouse Swiss Prot No :	Q9WTK3
Immunogen :	Synthesized peptide derived from human GPAA1 AA range: 111-161
Specificity :	This antibody detects endogenous levels of GPAA1 at Human/Mouse
Formulation :	Liquid in PBS containing 50% glycerol, 0.5% BSA and 0.02% sodium azide.
Source :	Polyclonal, Rabbit,IgG
Dilution :	WB 1[?]500-2000
Purification :	The antibody was affinity-purified from rabbit antiserum by affinity-chromatography using epitope-specific immunogen.
Concentration :	1 mg/ml

Storage Stability :	-15 °C to -25 °C/1 year(Do not lower than -25 °C)
Molecularweight :	68kD
Background :	Posttranslational glycosylphosphatidylinositol (GPI) anchor attachment serves as a general mechanism for linking proteins to the cell surface membrane. The protein encoded by this gene presumably functions in GPI anchoring at the GPI transfer step. The mRNA transcript is ubiquitously expressed in both fetal and adult tissues. The anchor attachment protein 1 contains an N-terminal signal sequence, 1 cAMP- and cGMP-dependent protein kinase phosphorylation site, 1 leucine zipper pattern, 2 potential N-glycosylation sites, and 8 putative transmembrane domains. [provided by RefSeq, Jul 2008],
Function :	function:Essential for GPI-anchoring of precursor proteins but not for GPI synthesis. Acts before or during formation of the carbonyl intermediate.,pathway:Glycolipid biosynthesis; glycosylphosphatidylinositol-anchor biosynthesis.,sequence caution:Erroneous prediction from an unspliced cDNA.,subunit:Forms a complex with PIGK/GPI8, PIGT, PIGU and PIGS.,tissue specificity:Ubiquitously expressed in fetal and adult tissues. Expressed at higher levels in fetal tissues than adult tissues.,
Subcellular Location :	Endoplasmic reticulum membrane ; Multi-pass membrane protein .
Expression :	Ubiquitously expressed in fetal and adult tissues. Expressed at higher levels in fetal tissues than adult tissues.
Sort :	6968
No4 :	1
Host :	Rabbit
Modifications :	Unmodified

Products Images



Western blot analysis of lysates from KB cells, primary antibody was diluted at 1:1000, 4° over night