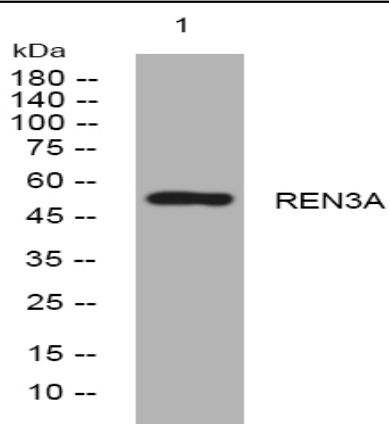


REN3A rabbit pAb

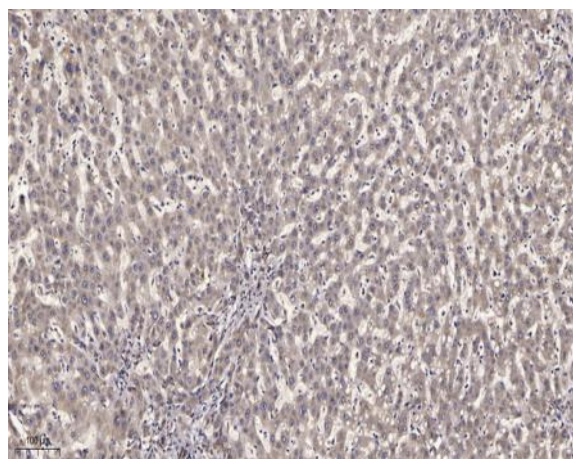
Catalog No :	YT6368
Reactivity :	Human
Applications :	WB;IHC
Target :	REN3A
Fields :	>>Nucleocytoplasmic transport;>>mRNA surveillance pathway
Gene Name :	UPF3A RENT3A UPF3
Protein Name :	REN3A
Human Gene Id :	65110
Human Swiss Prot No :	Q9H1J1
Immunogen :	Synthesized peptide derived from human REN3A AA range: 190-240
Specificity :	This antibody detects endogenous levels of REN3A at Human
Formulation :	Liquid in PBS containing 50% glycerol, 0.5% BSA and 0.02% sodium azide.
Source :	Polyclonal, Rabbit,IgG
Dilution :	WB 1:500-2000;IHC 1:50-300
Purification :	The antibody was affinity-purified from rabbit antiserum by affinity-chromatography using epitope-specific immunogen.
Concentration :	1 mg/ml
Storage Stability :	-15°C to -25°C/1 year(Do not lower than -25°C)
Molecularweight :	52kD

Background :	This gene encodes a protein that is part of a post-splicing multiprotein complex involved in both mRNA nuclear export and mRNA surveillance. The encoded protein is one of two functional homologs to yeast Upf3p. mRNA surveillance detects exported mRNAs with truncated open reading frames and initiates nonsense-mediated mRNA decay (NMD). When translation ends upstream from the last exon-exon junction, this triggers NMD to degrade mRNAs containing premature stop codons. This protein binds to the mRNA and remains bound after nuclear export, acting as a nucleocytoplasmic shuttling protein. It forms with Y14 a complex that binds specifically 20 nt upstream of exon-exon junctions. This gene is located on the long arm of chromosome 13. Two splice variants encoding different isoforms have been found for this gene. [provided by RefSeq, Jul 2008],
Function :	function:Part of a multiprotein post-splicing mRNP complex involved in both mRNA nuclear export and mRNA surveillance. Involved in nonsense-mediated decay (NMD) of mRNAs containing premature stop codons. Binds spliced mRNA upstream of exon-exon junctions.,similarity:Belongs to the RENT3 family.,subcellular location:Shuttling between the nucleus and the cytoplasm.,subunit:Found in a mRNP complex with RENT1, RENT2, RENT3A and RENT3B. Found in a mRNP complex with SMG1, RENT3A, RENT3B, RBM8A, THOC4 and NXF1. Found in a post-splicing complex with NXF1, RBM8A, RENT1, RENT2, RENT3A, RENT3B and RNPS1. Interacts with RENT2.,tissue specificity:Isoform 1 is strongly expressed in testis, uterus, muscle, fetal brain and spinal cord. Isoform 2 is strongly expressed in fetal brain and spinal cord.,
Subcellular Location :	Nucleus . Cytoplasm . Shuttling between the nucleus and the cytoplasm. .
Expression :	Isoform 1 is strongly expressed in testis, uterus, muscle, fetal brain and spinal cord. Isoform 2 is strongly expressed in fetal brain and spinal cord.
Sort :	14380
No4 :	1
Host :	Rabbit
Modifications :	Unmodified

Products Images



Western blot analysis of lysates from 293T cells, primary antibody was diluted at 1:1000, 4° over night



Immunohistochemical analysis of paraffin-embedded human liver cancer. 1, Antibody was diluted at 1:200(4° overnight). 2, Tris-EDTA,pH9.0 was used for antigen retrieval. 3,Secondary antibody was diluted at 1:200(room temperature, 45min).