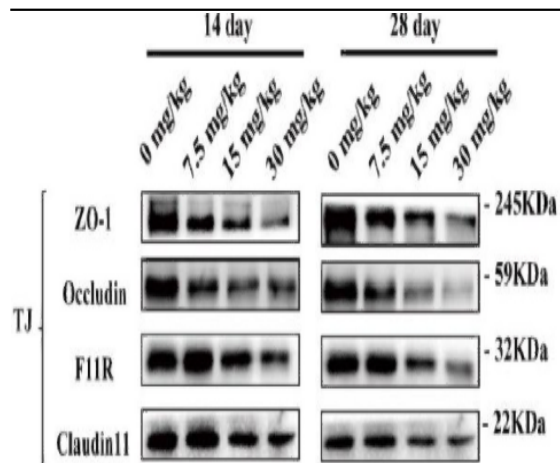


Claudin 11 Antibody

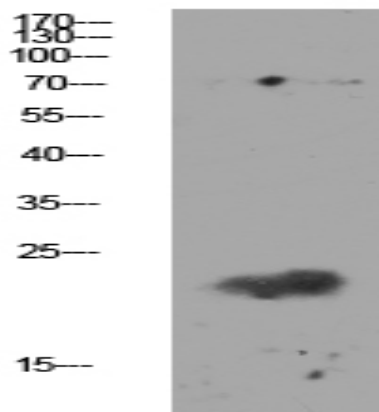
Catalog No :	YT6134
Reactivity :	Human;Mouse;Rat
Applications :	WB;ELISA
Target :	Claudin 11
Fields :	>>Cell adhesion molecules;>>Tight junction;>>Leukocyte transendothelial migration;>>Pathogenic Escherichia coli infection;>>Hepatitis C
Gene Name :	CLDN11 OSP OTM
Protein Name :	Claudin-11 (Oligodendrocyte-specific protein)
Human Gene Id :	5010
Human Swiss Prot No :	O75508
Mouse Gene Id :	18417
Mouse Swiss Prot No :	Q60771
Rat Swiss Prot No :	Q99P82
Immunogen :	Synthesized peptide derived from human Claudin 11
Specificity :	This antibody detects endogenous levels of Claudin 11 Antibody
Formulation :	Liquid in PBS containing 50% glycerol, 0.5% BSA and 0.02% sodium azide.
Source :	Polyclonal, Rabbit,IgG
Dilution :	WB 1:500-2000, ELISA 1:10000-20000
Purification :	The antibody was affinity-purified from rabbit antiserum by affinity-chromatography using epitope-specific immunogen.

Concentration :	1 mg/ml
Storage Stability :	-15°C to -25°C/1 year(Do not lower than -25°C)
Observed Band :	20kD
Cell Pathway :	Cell adhesion molecules (CAMs);Tight junction;Leukocyte transendothelial migration;
Background :	<p>This gene encodes a member of the claudin family. Claudins are integral membrane proteins and components of tight junction strands. Tight junction strands serve as a physical barrier to prevent solutes and water from passing freely through the paracellular space between epithelial or endothelial cell sheets, and also play critical roles in maintaining cell polarity and signal transductions. The protein encoded by this gene is a major component of central nervous system (CNS) myelin and plays an important role in regulating proliferation and migration of oligodendrocytes. Mouse studies showed that the gene deficiency results in deafness and loss of the Sertoli cell epithelial phenotype in the testis. This protein is a tight junction protein at the human blood-testis barrier (BTB), and the BTB disruption is related to a dysfunction of this gene. Alternatively spliced transcript variants encoding different iso</p>
Function :	<p>function:Plays a major role in tight junction-specific obliteration of the intercellular space, through calcium-independent cell-adhesion activity.,similarity:Belongs to the claudin family.,subunit:Interacts with tetraspanin-3/TSPAN3.,</p>
Subcellular Location :	Cell junction, tight junction. Cell membrane ; Multi-pass membrane protein .
Expression :	Lung,Spinal cord,
Tag :	hot
Sort :	4081
No4 :	1
Host :	Rabbit
Modifications :	Unmodified

Products Images



Nickel induces blood-testis barrier damage through ROS-mediated p38 MAPK pathways in mice. Redox Biology Hongrui Guo IF²WB Mouse testis tissue TM4 cell



Western blot analysis of mouse-kidney lysate, antibody was diluted at 1000. Secondary antibody(catalog#:RS0002) was diluted at 1:20000