

GG12C rabbit pAb

Catalog No :	YT6351
Reactivity :	Human
Applications :	WB
Target :	GG12C
Gene Name :	GAGE12B; GAGE12C; GAGE12D; GAGE12E
Protein Name :	GG12C
Human Gene Id :	100132399
Human Swiss Prot No :	A1L429
Immunogen :	Synthesized peptide derived from human GG12C AA range: 42-92
Specificity :	This antibody detects endogenous levels of GG12C at Human
Formulation :	Liquid in PBS containing 50% glycerol, 0.5% BSA and 0.02% sodium azide.
Source :	Polyclonal, Rabbit,IgG
Dilution :	WB 1:500-2000
Purification :	The antibody was affinity-purified from rabbit antiserum by affinity-chromatography using epitope-specific immunogen.
Concentration :	1 mg/ml
Storage Stability :	-15°C to -25°C/1 year(Do not lower than -25°C)
Molecularweight :	13kD
Function :	function:Antigen, recognized on melanoma by autologous cytolytic T-lymphocytes.,function:Antigen, recognized on melanoma by autologous cytolytic T-lymphocytes. Completely silent in normal adult tissues, except

testis.,similarity:Belongs to the GAGE family.,tissue specificity:Expressed in a variety of tumor tissues but not in normal tissues, except testis.,tissue specificity:Expressed in some prostate cancer tissues but not in normal prostate tissue.,tissue specificity:Not expressed in normal tissues, except in testis, but expressed by a large proportion of tumors of various histological origins.,

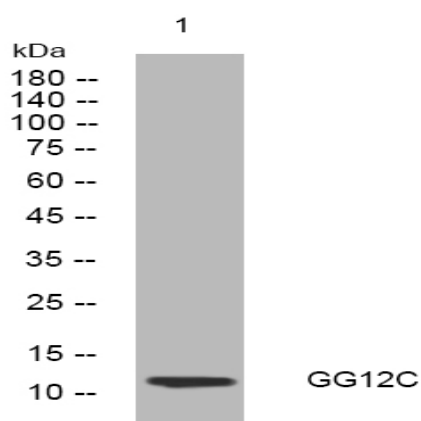
Sort : 6563

No4 : 1

Host : Rabbit

Modifications : Unmodified

Products Images



Western blot analysis of lysates from 293T cells, primary antibody was diluted at 1:1000, 4 ° over night