

CPSF1 rabbit pAb

Catalog No :	YT6342
Reactivity :	Human;Mouse
Applications :	WB
Target :	CPSF1
Fields :	>>mRNA surveillance pathway
Gene Name :	CPSF1 CPSF160
Protein Name :	CPSF1
Human Gene Id :	29894
Human Swiss Prot No :	Q10570
Mouse Gene Id :	94230
Mouse Swiss Prot No :	Q9EPU4
Immunogen :	Synthesized peptide derived from human CPSF1 AA range: 564-614
Specificity :	This antibody detects endogenous levels of CPSF1 at Human/Mouse
Formulation :	Liquid in PBS containing 50% glycerol, 0.5% BSA and 0.02% sodium azide.
Source :	Polyclonal, Rabbit,IgG
Dilution :	WB 1[?]500-2000
Purification :	The antibody was affinity-purified from rabbit antiserum by affinity-chromatography using epitope-specific immunogen.
Concentration :	1 mg/ml

Storage Stability : -15°C to -25°C/1 year (Do not lower than -25°C)

Molecularweight : 159kD

Background : Cleavage and polyadenylation specificity factor (CPSF) is a multisubunit complex that plays a central role in 3-prime processing of pre-mRNAs. CPSF recognizes the AAUAAA signal in the pre-mRNA and interacts with other proteins to facilitate both RNA cleavage and poly(A) synthesis. CPSF1 is the largest subunit of the CPSF complex (Murthy and Manley, 1995 [PubMed 7590244]). [supplied by OMIM, Mar 2008],

Function : function:Component of the cleavage and polyadenylation specificity factor (CPSF) complex that plays a key role in pre-mRNA 3'-end formation, recognizing the AAUAAA signal sequence and interacting with poly(A) polymerase and other factors to bring about cleavage and poly(A) addition. This subunit is involved in the RNA recognition step of the polyadenylation reaction.,PTM:The N-terminus is blocked.,similarity:Belongs to the CPSF1 family.,subunit:Component of the cleavage and polyadenylation specificity factor (CPSF) complex, composed of CPSF1, CPSF2, CPSF3, CPSF4 and FIP1L1. Found in a complex with CPSF1, FIP1L1 and PAPOLA. Interacts with FIP1L1, PAPD4/GLD2 and SRRM1.,

Subcellular Location : Nucleus, nucleoplasm.

Expression : Widely expressed, with high expression in the retina.

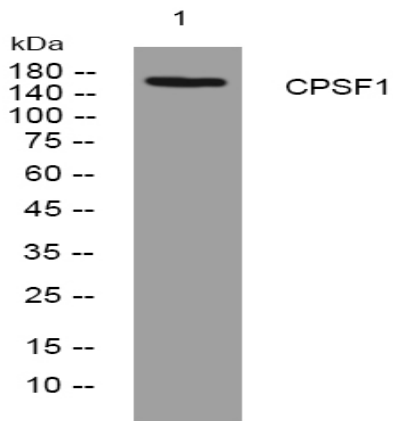
Sort : 4517

No4 : 1

Host : Rabbit

Modifications : Unmodified

Products Images



Western blot analysis of lysates from DU145 cells, primary antibody was diluted at 1:1000, 4° over night