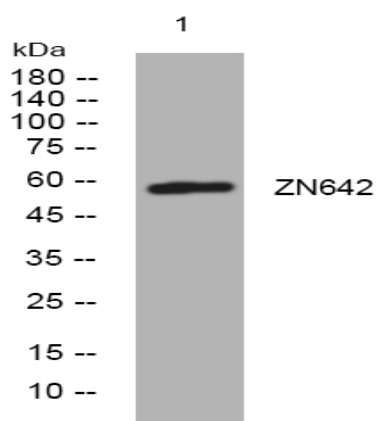


ZN642 rabbit pAb

Catalog No :	YT6333
Reactivity :	Human;Mouse
Applications :	WB
Target :	ZN642
Fields :	>>Herpes simplex virus 1 infection
Gene Name :	ZNF642
Protein Name :	ZN642
Human Gene Id :	339559
Human Swiss Prot No :	Q49AA0
Immunogen :	Synthesized peptide derived from human ZN642 AA range: 257-307
Specificity :	This antibody detects endogenous levels of ZN642 at Human
Formulation :	Liquid in PBS containing 50% glycerol, 0.5% BSA and 0.02% sodium azide.
Source :	Polyclonal, Rabbit,IgG
Dilution :	WB 1[?]500-2000
Purification :	The antibody was affinity-purified from rabbit antiserum by affinity-chromatography using epitope-specific immunogen.
Concentration :	1 mg/ml
Storage Stability :	-15°C to -25°C/1 year(Do not lower than -25°C)
Molecularweight :	58kD

Function :	function:May be involved in transcriptional regulation.,sequence caution:Translated as Tyr.,similarity:Belongs to the krueppel C2H2-type zinc-finger protein family.,similarity:Contains 1 KRAB domain.,similarity:Contains 9 C2H2-type zinc fingers.,
Subcellular Location :	Nucleus .
Expression :	Expressed in visceral and subcutaneous adipose tissue.
Sort :	24662
No4 :	1
Host :	Rabbit
Modifications :	Unmodified

Products Images



Western blot analysis of lysates from AD293 cells, primary antibody was diluted at 1:1000, 4° over night