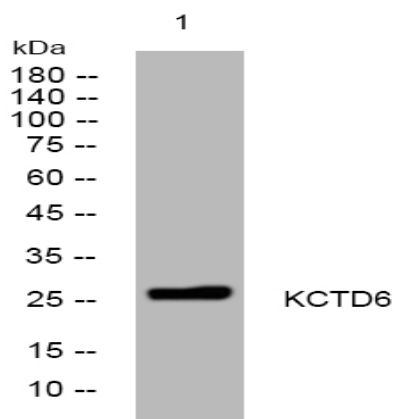


KCTD6 rabbit pAb

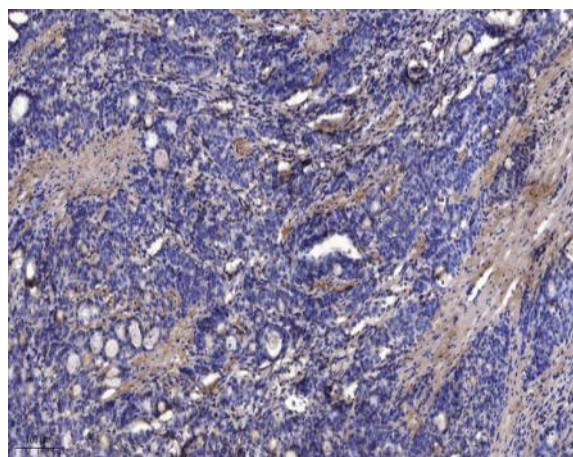
Catalog No :	YT6332
Reactivity :	Human;Mouse
Applications :	WB;IHC
Target :	KCTD6
Gene Name :	KCTD6
Protein Name :	KCTD6
Human Gene Id :	200845
Human Swiss Prot No :	Q8NC69
Mouse Gene Id :	71393
Mouse Swiss Prot No :	Q8BNL5
Immunogen :	Synthesized peptide derived from human KCTD6 AA range: 118-168
Specificity :	This antibody detects endogenous levels of KCTD6 at Human/Mouse
Formulation :	Liquid in PBS containing 50% glycerol, 0.5% BSA and 0.02% sodium azide.
Source :	Polyclonal, Rabbit,IgG
Dilution :	WB 1:500-2000;IHC 1:50-300
Purification :	The antibody was affinity-purified from rabbit antiserum by affinity-chromatography using epitope-specific immunogen.
Concentration :	1 mg/ml
Storage Stability :	-15°C to -25°C/1 year(Do not lower than -25°C)

Molecularweight :	26kD
Function :	similarity:Contains 1 BTB (POZ) domain.,
Subcellular Location :	Cytoplasm, myofibril, sarcomere, M line . Colocalizes with ANK1 isoform Mu17 at the M line in differentiated skeletal muscle cells and heart. .
Expression :	Highly expressed in cerebellum and brain. Expression is down-regulated in medulloblastoma.
Sort :	8874
No4 :	1
Host :	Rabbit
Modifications :	Unmodified

Products Images



Western blot analysis of lysates from A549 cells, primary antibody was diluted at 1:1000, 4° over night



Immunohistochemical analysis of paraffin-embedded human Gastric adenocarcinoma. 1, Antibody was diluted at 1:200(4° overnight). 2, Tris-EDTA,pH9.0 was used for antigen retrieval. 3,Secondary antibody was diluted at 1:200(room temperature, 45min).