

## LUZP1 rabbit pAb

<b>Catalog No :</b>	YT6330
<b>Reactivity :</b>	Human;Mouse;Rat
<b>Applications :</b>	WB
<b>Target :</b>	LUZP1
<b>Gene Name :</b>	LUZP1
<b>Protein Name :</b>	LUZP1
<b>Human Gene Id :</b>	7798
<b>Human Swiss Prot No :</b>	Q86V48
<b>Mouse Gene Id :</b>	269593
<b>Mouse Swiss Prot No :</b>	Q8R4U7
<b>Rat Swiss Prot No :</b>	Q9ESV1
<b>Immunogen :</b>	Synthesized peptide derived from human LUZP1 AA range: 555-605
<b>Specificity :</b>	This antibody detects endogenous levels of LUZP1 at Human/Mouse/Rat
<b>Formulation :</b>	Liquid in PBS containing 50% glycerol, 0.5% BSA and 0.02% sodium azide.
<b>Source :</b>	Polyclonal, Rabbit,IgG
<b>Dilution :</b>	WB 1[?]500-2000
<b>Purification :</b>	The antibody was affinity-purified from rabbit antiserum by affinity-chromatography using epitope-specific immunogen.
<b>Concentration :</b>	1 mg/ml

**Storage Stability :** -15°C to -25°C/1 year(Do not lower than -25°C)

**Molecularweight :** 118kD

**Background :** This gene encodes a protein that contains a leucine zipper motif. The exact function of the encoded protein is not known. In mice this gene affects neural tube closure. Alternative splicing results in multiple transcript variants. [provided by RefSeq, Dec 2008],

**Function :** subcellular location:Also detected in soma and dendrites of neurons.,

**Subcellular Location :** Nucleus. Also detected in soma and dendrites of neurons. .

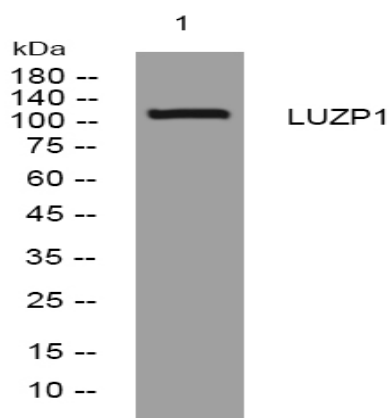
**Sort :** 9294

**No4 :** 1

**Host :** Rabbit

**Modifications :** Unmodified

## Products Images



Western blot analysis of lysates from U2OS cells, primary antibody was diluted at 1:1000, 4° over night