

UBE2B rabbit pAb

Catalog No :	YT6329
Reactivity :	Human;Mouse;Rat
Applications :	WB
Target :	UBE2B
Fields :	>>Ubiquitin mediated proteolysis
Gene Name :	UBE2B RAD6B
Protein Name :	UBE2B
Human Gene Id :	7320
Human Swiss Prot No :	P63146
Mouse Gene Id :	22210
Mouse Swiss Prot No :	P63147
Rat Gene Id :	81816
Rat Swiss Prot No :	P63149
Immunogen :	Synthesized peptide derived from human UBE2B AA range: 23-73
Specificity :	This antibody detects endogenous levels of UBE2B at Human/Mouse/Rat
Formulation :	Liquid in PBS containing 50% glycerol, 0.5% BSA and 0.02% sodium azide.
Source :	Polyclonal, Rabbit,IgG
Dilution :	WB 1[?]500-2000
Purification :	The antibody was affinity-purified from rabbit antiserum by affinity-

chromatography using epitope-specific immunogen.

Concentration : 1 mg/ml

Storage Stability : -15°C to -25°C/1 year(Do not lower than -25°C)

Molecularweight : 17kD

Background : The modification of proteins with ubiquitin is an important cellular mechanism for targeting abnormal or short-lived proteins for degradation. Ubiquitination involves at least three classes of enzymes: ubiquitin-activating enzymes, or E1s, ubiquitin-conjugating enzymes, or E2s, and ubiquitin-protein ligases, or E3s. This gene encodes a member of the E2 ubiquitin-conjugating enzyme family. This enzyme is required for post-replicative DNA damage repair. Its protein sequence is 100% identical to the mouse, rat, and rabbit homologs, which indicates that this enzyme is highly conserved in eukaryotic evolution. [provided by RefSeq, Jul 2008],

Function : catalytic activity:ATP + ubiquitin + protein lysine = AMP + diphosphate + protein N-ubiquityllysine.,function:Catalyzes the covalent attachment of ubiquitin to other proteins. Required for postreplication repair of UV-damaged DNA. Associates to the E3 ligase RAD18 to form the UBE2B-RAD18 ubiquitin ligase complex involved in mono-ubiquitination of DNA-associated PCNA on 'Lys-164'. May be involved in neurite outgrowth.,pathway:Protein modification; protein ubiquitination.,similarity:Belongs to the ubiquitin-conjugating enzyme family.,subcellular location:In peripheral neurons, expressed both at the plasma membrane and in nuclei.,subunit:Interacts with RAD18 and UBR2.,

Subcellular Location : Cell membrane . Nucleus . In peripheral neurons, expressed both at the plasma membrane and in nuclei. .

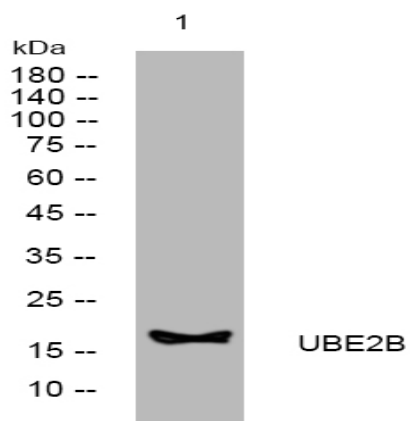
Sort : 23858

No4 : 1

Host : Rabbit

Modifications : Unmodified

Products Images



Western blot analysis of lysates from A549 cells, primary antibody was diluted at 1:1000, 4° over night