

TKNK rabbit pAb

Catalog No :	YT6328
Reactivity :	Human;Mouse;Rat
Applications :	WB;ELISA;IHC
Target :	TKNK
Fields :	>>Neuroactive ligand-receptor interaction
Gene Name :	TAC3 NKNB UNQ585/PRO1155
Protein Name :	TKNK
Human Gene Id :	6866
Human Swiss Prot No :	Q9UHF0
Mouse Gene Id :	21334
Mouse Swiss Prot No :	P55099
Rat Gene Id :	29191
Rat Swiss Prot No :	P08435
Immunogen :	Synthesized peptide derived from human TKNK AA range: 6-56
Specificity :	This antibody detects endogenous levels of TKNK at Human/Mouse/Rat
Formulation :	Liquid in PBS containing 50% glycerol, 0.5% BSA and 0.02% sodium azide.
Source :	Polyclonal, Rabbit,IgG
Dilution :	WB 1:500-2000;IHC 1:50-300; ELISA 2000-20000
Purification :	The antibody was affinity-purified from rabbit antiserum by affinity-

chromatography using epitope-specific immunogen.

Concentration : 1 mg/ml

Storage Stability : -15°C to -25°C/1 year(Do not lower than -25°C)

Molecularweight : 13kD

Background : This gene encodes a member of the tachykinin family of secreted neuropeptides. The encoded preproprotein is proteolytically processed to generate the mature peptide, which is primarily expressed in the central and peripheral nervous systems and functions as a neurotransmitter. This peptide is the ligand for the neurokinin-3 receptor. This protein is also expressed in the outer syncytiotrophoblast of the placenta and may be associated with pregnancy-induced hypertension and pre-eclampsia. Mutations in this gene are associated with normosmic hypogonadotropic hypogonadism. Alternative splicing results in multiple transcript variants, at least one of which encodes an isoform that is proteolytically processed. [provided by RefSeq, Feb 2016],

Function : developmental stage:In pregnancy, the expression of NKB is confined to the outer syncytiotrophoblast of the placenta, significant concentrations of NKB can be detected in plasma as early as week 9, and plasma concentrations of NKB are grossly elevated in pregnancy-induced hypertension and pre-eclampsia.,function:Tachykinins are active peptides which excite neurons, evoke behavioral responses, are potent vasodilators and secretagogues, and contract (directly or indirectly) many smooth muscles.,similarity:Belongs to the tachykinin family.,

Subcellular Location : Secreted.

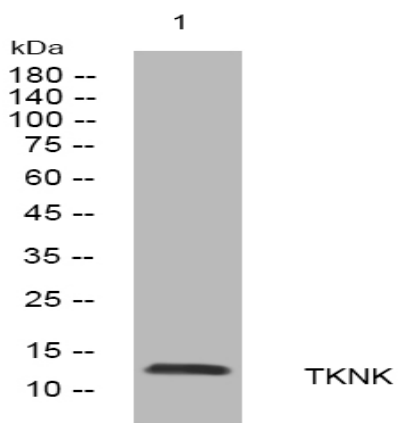
Sort : 17188

No4 : 1

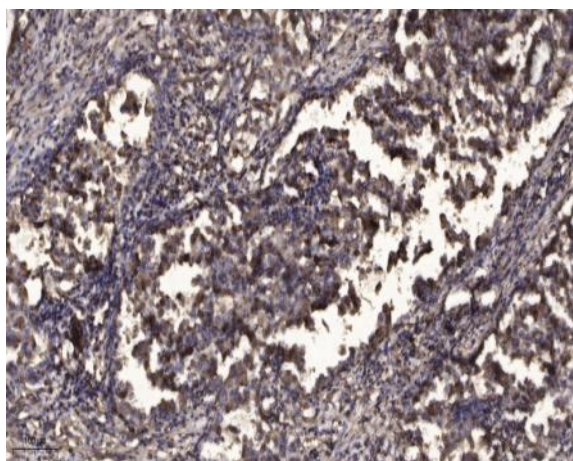
Host : Rabbit

Modifications : Unmodified

Products Images



Western blot analysis of lysates from HuvEc cells, primary antibody was diluted at 1:1000, 4° over night



Immunohistochemical analysis of paraffin-embedded human Squamous cell carcinoma of lung. 1, Antibody was diluted at 1:200(4° overnight). 2, Tris-EDTA,pH9.0 was used for antigen retrieval. 3,Secondary antibody was diluted at 1:200(room temperature, 45min).