

## CA159 rabbit pAb

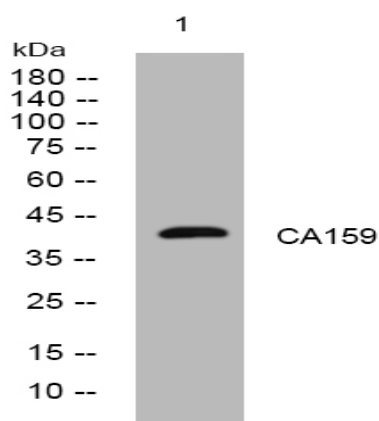
<b>Catalog No :</b>	YT6326
<b>Reactivity :</b>	Human
<b>Applications :</b>	WB
<b>Target :</b>	CA159
<b>Gene Name :</b>	C1orf159 UNQ2998/PRO9739
<b>Protein Name :</b>	CA159
<b>Human Gene Id :</b>	54991
<b>Human Swiss Prot No :</b>	Q96HA4
<b>Immunogen :</b>	Synthesized peptide derived from human CA159 AA range: 245-295
<b>Specificity :</b>	This antibody detects endogenous levels of CA159 at Human
<b>Formulation :</b>	Liquid in PBS containing 50% glycerol, 0.5% BSA and 0.02% sodium azide.
<b>Source :</b>	Polyclonal, Rabbit,IgG
<b>Dilution :</b>	WB 1[?]500-2000
<b>Purification :</b>	The antibody was affinity-purified from rabbit antiserum by affinity-chromatography using epitope-specific immunogen.
<b>Concentration :</b>	1 mg/ml
<b>Storage Stability :</b>	-15°C to -25°C/1 year(Do not lower than -25°C)
<b>Molecularweight :</b>	42kD
<b>Subcellular Location :</b>	Membrane ; Single-pass membrane protein .

---

<b>Sort :</b>	<u>2981</u>
<b>No4 :</b>	<u>1</u>
<b>Host :</b>	<u>Rabbit</u>
<b>Modifications :</b>	<u>Unmodified</u>

---

## Products Images



Western blot analysis of lysates from A431 cells, primary antibody was diluted at 1:1000, 4° over night