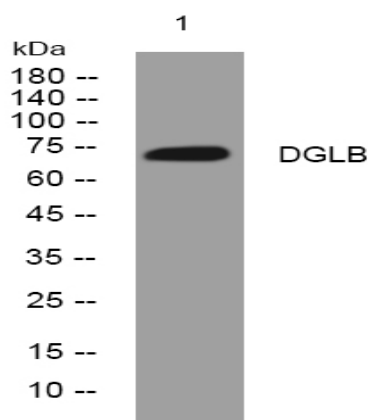


DGLB rabbit pAb

Catalog No :	YT6321
Reactivity :	Human;Mouse;Rat
Applications :	WB
Target :	DGLB
Fields :	>>Retrograde endocannabinoid signaling;>>Aldosterone synthesis and secretion
Gene Name :	DAGLB
Protein Name :	DGLB
Human Gene Id :	221955
Human Swiss Prot No :	Q8NCG7
Mouse Gene Id :	231871
Mouse Swiss Prot No :	Q91WC9
Rat Swiss Prot No :	P0C1S9
Immunogen :	Synthesized peptide derived from human DGLB AA range: 616-666
Specificity :	This antibody detects endogenous levels of DGLB at Human/Mouse/Rat
Formulation :	Liquid in PBS containing 50% glycerol, 0.5% BSA and 0.02% sodium azide.
Source :	Polyclonal, Rabbit,IgG
Dilution :	WB 1:500-2000
Purification :	The antibody was affinity-purified from rabbit antiserum by affinity-chromatography using epitope-specific immunogen.

Concentration :	1 mg/ml
Storage Stability :	-15°C to -25°C/1 year(Do not lower than -25°C)
Molecularweight :	74kD
Function :	cofactor:Calcium.,enzyme regulation:Inhibited by p-hydroxy-mercuri-benzoate and HgCl(2), but not to PMSF. Also inhibited by RHC80267, a drug that blocks 2-AG formation.,function:Catalyzes the hydrolysis of diacylglycerol (DAG) to 2-arachidonoyl-glycerol (2-AG), the most abundant endocannabinoid in tissues. Required for axonal growth during development and for retrograde synaptic signaling at mature synapses.,similarity:Belongs to the AB hydrolase superfamily. Lipase family.,
Subcellular Location :	Cell membrane ; Multi-pass membrane protein .
Sort :	5123
No4 :	1
Host :	Rabbit
Modifications :	Unmodified

Products Images



Western blot analysis of lysates from HeLa cells, primary antibody was diluted at 1:1000, 4° over night