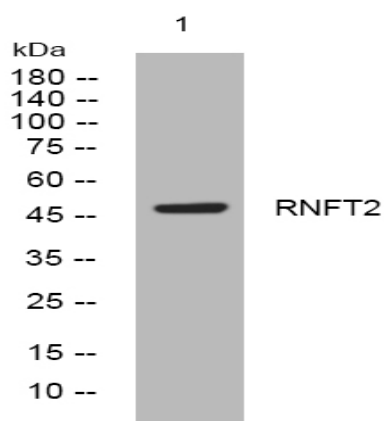


## RNFT2 rabbit pAb

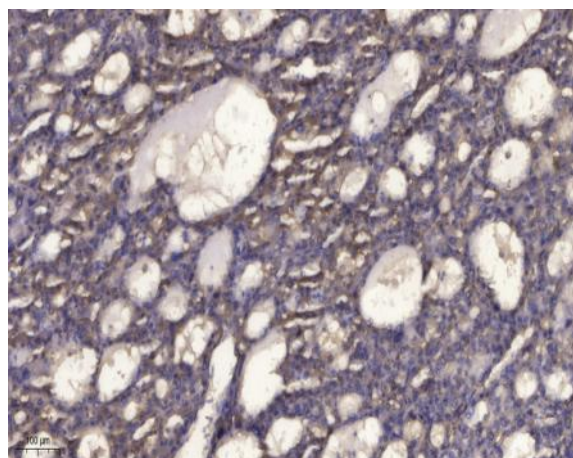
<b>Catalog No :</b>	YT6320
<b>Reactivity :</b>	Human;Mouse
<b>Applications :</b>	WB;IHC
<b>Target :</b>	RNFT2
<b>Gene Name :</b>	RNFT2 TMEM118
<b>Protein Name :</b>	RNFT2
<b>Human Gene Id :</b>	84900
<b>Human Swiss Prot No :</b>	Q96EX2
<b>Mouse Gene Id :</b>	269695
<b>Mouse Swiss Prot No :</b>	Q3UF64
<b>Immunogen :</b>	Synthesized peptide derived from human RNFT2 AA range: 12-62
<b>Specificity :</b>	This antibody detects endogenous levels of RNFT2 at Human/Mouse
<b>Formulation :</b>	Liquid in PBS containing 50% glycerol, 0.5% BSA and 0.02% sodium azide.
<b>Source :</b>	Polyclonal, Rabbit,IgG
<b>Dilution :</b>	WB 1:500-2000;IHC 1:50-300
<b>Purification :</b>	The antibody was affinity-purified from rabbit antiserum by affinity-chromatography using epitope-specific immunogen.
<b>Concentration :</b>	1 mg/ml
<b>Storage Stability :</b>	-15°C to -25°C/1 year(Do not lower than -25°C)

**Molecularweight :** 49kD**Function :** similarity:Contains 1 RING-type zinc finger.,**Subcellular Location :** Membrane ; Multi-pass membrane protein .**Sort :** 14562**No4 :** 1**Host :** Rabbit**Modifications :** Unmodified

## Products Images



Western blot analysis of lysates from KB cells, primary antibody was diluted at 1:1000, 4° over night



Immunohistochemical analysis of paraffin-embedded human liver cancer. 1, Antibody was diluted at 1:200(4° overnight). 2, Tris-EDTA,pH9.0 was used for antigen retrieval. 3,Secondary antibody was diluted at 1:200(room temperature, 45min).