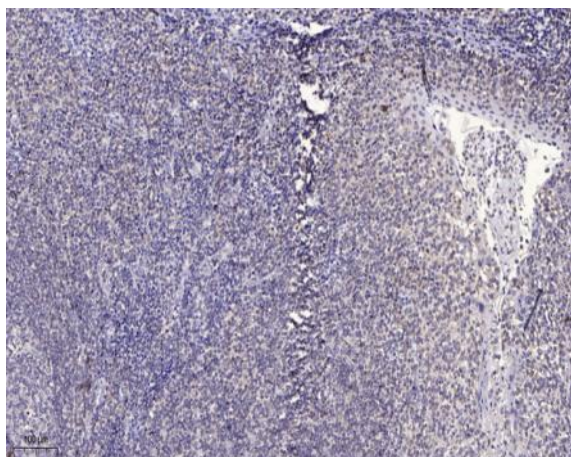


CK010 rabbit pAb

Catalog No :	YT6308
Reactivity :	Human;Mouse
Applications :	IHC;IF
Target :	CK010
Gene Name :	C11orf10 HSPC005
Protein Name :	CK010
Human Gene Id :	746
Human Swiss Prot No :	P61165
Mouse Gene Id :	69038
Mouse Swiss Prot No :	P61166
Immunogen :	Synthesized peptide derived from human CK010 AA range: 15-65
Specificity :	This antibody detects endogenous levels of CK010 at Human/Mouse
Formulation :	Liquid in PBS containing 50% glycerol, 0.5% BSA and 0.02% sodium azide.
Source :	Polyclonal, Rabbit,IgG
Dilution :	IHC 1:50-200. IF 1:50-200
Purification :	The antibody was affinity-purified from rabbit antiserum by affinity-chromatography using epitope-specific immunogen.
Concentration :	1 mg/ml
Storage Stability :	-15°C to -25°C/1 year(Do not lower than -25°C)

Molecularweight :	9kD
Function :	similarity:Belongs to the UPF0197 family.,
Subcellular Location :	Membrane ; Multi-pass membrane protein . Endoplasmic reticulum . Cytoplasm .
Expression :	Ubiquitously expressed.
Sort :	4019
No4 :	1
Host :	Rabbit
Modifications :	Unmodified

Products Images



Immunohistochemical analysis of paraffin-embedded human tonsil. 1, Antibody was diluted at 1:200(4° overnight). 2, Tris-EDTA,pH9.0 was used for antigen retrieval. 3,Secondary antibody was diluted at 1:200(room temperature, 30min).