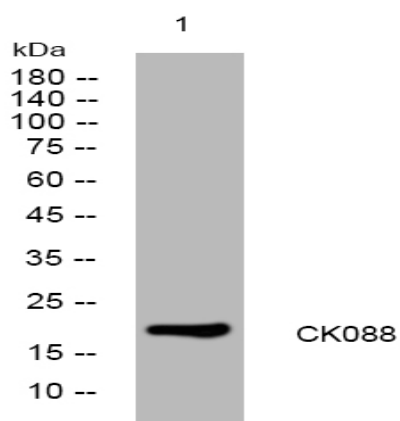


CK088 rabbit pAb

| | |
|------------------------------|---|
| Catalog No : | YT6306 |
| Reactivity : | Human;Mouse |
| Applications : | WB |
| Target : | CK088 |
| Gene Name : | C11orf88 |
| Protein Name : | CK088 |
| Human Gene Id : | 399949 |
| Human Swiss Prot No : | Q6PI97 |
| Mouse Gene Id : | 235345 |
| Mouse Swiss Prot No : | Q80Y73 |
| Immunogen : | Synthesized peptide derived from human CK088 AA range: 15-65 |
| Specificity : | This antibody detects endogenous levels of CK088 at Human/Mouse |
| Formulation : | Liquid in PBS containing 50% glycerol, 0.5% BSA and 0.02% sodium azide. |
| Source : | Polyclonal, Rabbit,IgG |
| Dilution : | WB 1[?]500-2000 |
| Purification : | The antibody was affinity-purified from rabbit antiserum by affinity-chromatography using epitope-specific immunogen. |
| Concentration : | 1 mg/ml |
| Storage Stability : | -15°C to -25°C/1 year(Do not lower than -25°C) |

| | |
|-------------------------------|--|
| Molecularweight : | 19kD |
| Function : | similarity:Belongs to the UPF0722 family., |
| Subcellular Location : | Cytoplasm . Cell projection, cilium . |
| Sort : | 4026 |
| No4 : | 1 |
| Host : | Rabbit |
| Modifications : | Unmodified |

Products Images



Western blot analysis of lysates from 3T3 cells, primary antibody was diluted at 1:1000, 4° over night