

ODF3A rabbit pAb

Catalog No :	YT6305
Reactivity :	Human;Mouse
Applications :	WB
Target :	ODF3A
Gene Name :	ODF3 SHIPPO1 TISP50
Protein Name :	ODF3A
Human Gene Id :	113746
Human Swiss Prot No :	Q96PU9
Mouse Gene Id :	69287
Mouse Swiss Prot No :	Q920N1
Immunogen :	Synthesized peptide derived from human ODF3A AA range: 160-210
Specificity :	This antibody detects endogenous levels of ODF3A at Human/Mouse
Formulation :	Liquid in PBS containing 50% glycerol, 0.5% BSA and 0.02% sodium azide.
Source :	Polyclonal, Rabbit,IgG
Dilution :	WB 1:500-2000
Purification :	The antibody was affinity-purified from rabbit antiserum by affinity-chromatography using epitope-specific immunogen.
Concentration :	1 mg/ml
Storage Stability :	-15°C to -25°C/1 year(Do not lower than -25°C)

Molecularweight : 28kD

Background : ODF3 is a component of sperm flagella outer dense fibers, which add stiffness, elastic recoil, and protection against shearing forces during sperm movement.[supplied by OMIM, Apr 2004],

Function : function:Outer dense fibers are filamentous structures located on the outside of the axoneme in the midpiece and principal piece of the mammalian sperm tail. May help to maintain the passive elastic structures and elastic recoil of the sperm tail.,miscellaneous:'Shippo' is a Japanese word for tail.,similarity:Belongs to the ODF3 family.,similarity:Contains 2 DUF1309 repeats.,subcellular location:Expressed in the cytoplasmic lobe of spermatids.,tissue specificity:Testis-specific.,

Subcellular Location : Cytoplasm . Expressed in the cytoplasmic lobe of spermatids. .

Expression : Testis-specific.

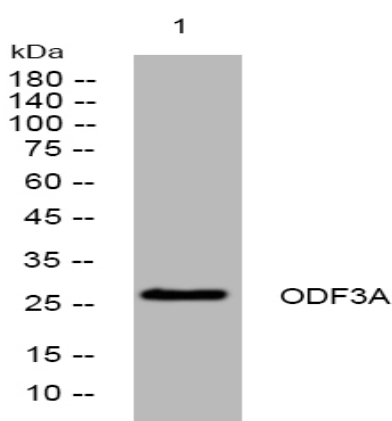
Sort : 11063

No4 : 1

Host : Rabbit

Modifications : Unmodified

Products Images



Western blot analysis of lysates from HCT116 cells, primary antibody was diluted at 1:1000, 4° over night