

IER5 rabbit pAb

Catalog No :	YT6298
Reactivity :	Human;Mouse
Applications :	WB
Target :	IER5
Gene Name :	IER5 PP4583 SBB148
Protein Name :	IER5
Human Gene Id :	51278
Human Swiss Prot No :	Q5VY09
Mouse Gene Id :	15939
Mouse Swiss Prot No :	O89113
Immunogen :	Synthesized peptide derived from human IER5 AA range: 28-78
Specificity :	This antibody detects endogenous levels of IER5 at Human/Mouse
Formulation :	Liquid in PBS containing 50% glycerol, 0.5% BSA and 0.02% sodium azide.
Source :	Polyclonal, Rabbit,IgG
Dilution :	WB 1:500-2000
Purification :	The antibody was affinity-purified from rabbit antiserum by affinity-chromatography using epitope-specific immunogen.
Concentration :	1 mg/ml
Storage Stability :	-15°C to -25°C/1 year(Do not lower than -25°C)

Molecularweight : 36kD

Background : This gene encodes a protein that is similar to other immediate early response proteins. In the mouse, a similar gene may play an important role in mediating the cellular response to mitogenic signals. Studies in rats found the expression of a similar gene to be increased after waking and sleep deprivation. [provided by RefSeq, Jul 2008],

Function : similarity:Belongs to the IER family.,

Subcellular Location : Nucleus . Cytoplasm . Predominantly cytoplasmic (PubMed:25816751). Translocated in the nucleus during heat shock (PubMed:25816751). .

Expression : Expressed in acute myeloid leukemia (AML) cells.

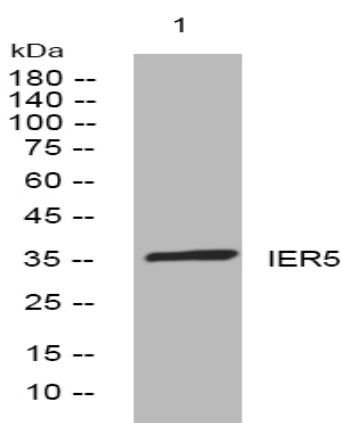
Sort : 8314

No4 : 1

Host : Rabbit

Modifications : Unmodified

Products Images



Western blot analysis of lysates from AD293 cells, primary antibody was diluted at 1:1000, 4° over night