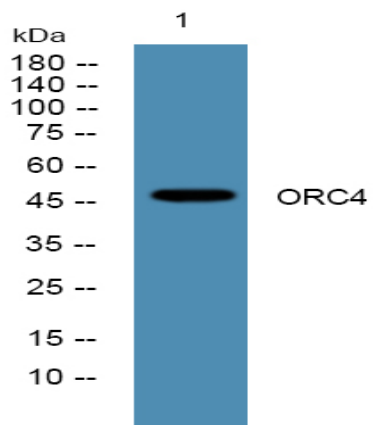


ORC4 Polyclonal Antibody

Catalog No :	YN0336
Reactivity :	Human;Mouse;Rat
Applications :	WB;ELISA
Target :	ORC4
Fields :	>>Cell cycle
Gene Name :	ORC4 ORC4L
Protein Name :	Origin recognition complex subunit 4
Human Gene Id :	5000
Human Swiss Prot No :	O43929
Mouse Swiss Prot No :	O88708
Rat Swiss Prot No :	Q6P9Z8
Immunogen :	Synthesized peptide derived from human protein . at AA range: 140-220
Specificity :	ORC4 Polyclonal Antibody detects endogenous levels of protein.
Formulation :	Liquid in PBS containing 50% glycerol, and 0.02% sodium azide.
Source :	Polyclonal, Rabbit,IgG
Dilution :	WB 1:500-2000 ELISA 1:5000-20000
Purification :	The antibody was affinity-purified from rabbit antiserum by affinity-chromatography using epitope-specific immunogen.
Concentration :	1 mg/ml

Storage Stability :	<u>-15°C to -25°C/1 year(Do not lower than -25°C)</u>
Observed Band :	<u>47kD</u>
Cell Pathway :	<u>Cell_Cycle_G1S;Cell_Cycle_G2M_DNA;</u>
Background :	<u>The origin recognition complex (ORC) is a highly conserved six subunit protein complex essential for the initiation of the DNA replication in eukaryotic cells. Studies in yeast demonstrated that ORC binds specifically to origins of replication and serves as a platform for the assembly of additional initiation factors such as Cdc6 and Mcm proteins. This gene encodes a subunit of the ORC complex. Several alternatively spliced transcript variants, some of which encode the same protein, have been reported for this gene. [provided by RefSeq, Oct 2010],</u>
Function :	<u>function:Component of the origin recognition complex (ORC) that binds origins of replication. It has a role in both chromosomal replication and mating type transcriptional silencing. Binds to the ARS consensus sequence (ACS) of origins of replication in an ATP-dependent manner.,similarity:Belongs to the ORC4 family.,subunit:ORC is composed of six subunits. Interacts with DBF4.,</u>
Subcellular Location :	<u>Nucleus.</u>
Expression :	<u>Placenta,Uterus,</u>
Sort :	<u>20721</u>
No4 :	<u>1</u>
Host :	<u>Rabbit</u>
Modifications :	<u>Unmodified</u>

Products Images



Western blot analysis of lysates from DU145 cells, primary antibody was diluted at 1:1000, 4° over night