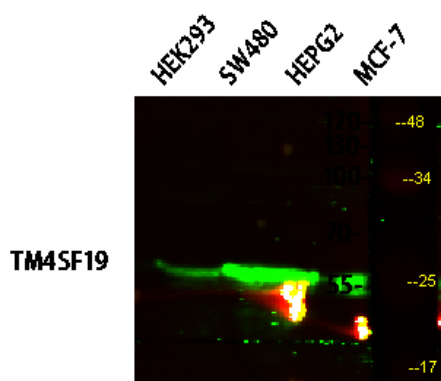


TM4SF19 Polyclonal Antibody

Catalog No :	YT6290
Reactivity :	Human;Mouse;Rat
Applications :	WB;ELISA
Target :	TM4SF19
Gene Name :	TM4SF19 OCTM4
Protein Name :	TM4SF19
Human Gene Id :	116211
Human Swiss Prot No :	Q96DZ7
Immunogen :	Synthesized peptide derived from human TM4SF19. AA range:140-160
Specificity :	This antibody detects endogenous levels of human TM4SF19
Formulation :	Liquid in PBS containing 50% glycerol, 0.5% BSA and 0.02% sodium azide.
Source :	Polyclonal, Rabbit,IgG
Dilution :	WB 1:500-2000, ELISA(peptide)1:5000-20000
Purification :	The antibody was affinity-purified from rabbit antiserum by affinity-chromatography using epitope-specific immunogen.
Concentration :	1 mg/ml
Storage Stability :	-15°C to -25°C/1 year(Do not lower than -25°C)
Observed Band :	24kD
Background :	similarity:Belongs to the L6 tetraspanin family.,

Function :	similarity:Belongs to the L6 tetraspanin family.,
Subcellular Location :	Membrane ; Multi-pass membrane protein .
Expression :	Skin,
Tag :	orthogonal,hot
Sort :	17219
No4 :	1
Host :	Rabbit
Modifications :	Unmodified

Products Images



Western blot analysis of various lysates, primary antibody was diluted at 1:1000, 4° over night, secondary antibody(cat: RS23920)was diluted at 1:10000, 37° 1hour.