

FKBP1B Polyclonal Antibody

Catalog No :	YT6282
Reactivity :	Human;Rat;Mouse;
Applications :	IHC;ELISA
Target :	FKBP1B
Gene Name :	FKBP1B FKBP12.6 FKBP1L FKBP9 OTK4
Protein Name :	FKBP1B
Human Gene Id :	2281
Human Swiss Prot No :	P68106
Immunogen :	Synthesized peptide derived from human FKBP1B AA range: 35-85
Specificity :	This antibody detects endogenous levels of human FKBP1B
Formulation :	Liquid in PBS containing 50% glycerol, 0.5% BSA and 0.02% sodium azide.
Source :	Polyclonal, Rabbit,IgG
Dilution :	IHC 1:50-200, ELISA(peptide)1:5000-20000
Purification :	The antibody was affinity-purified from rabbit antiserum by affinity-chromatography using epitope-specific immunogen.
Concentration :	1 mg/ml
Storage Stability :	-15°C to -25°C/1 year(Do not lower than -25°C)
Background :	The protein encoded by this gene is a member of the immunophilin protein family, which play a role in immunoregulation and basic cellular processes involving protein folding and trafficking. This encoded protein is a cis-trans prolyl isomerase that binds the immunosuppressants FK506 and rapamycin. It is highly similar to the FK506-binding protein 1A. Its physiological role is thought to be in

excitation-contraction coupling in cardiac muscle. There are two alternatively spliced transcript variants of this gene encoding different isoforms. [provided by RefSeq, Jul 2008],

Function :

catalytic activity:Peptidylproline (omega=180) = peptidylproline (omega=0).,enzyme regulation:Inhibited by both FK506 and rapamycin.,function:Associates with the ryanodine receptor (RYR-2) in cardiac muscle sarcoplasmic reticulum and may play a unique physiological role in excitation-contraction coupling in cardiac muscle. There are four molecules of FKBP12.6 per heart muscle RYR. Has the potential to contribute to the immunosuppressive and toxic effects of FK506 and rapamycin. PPIases accelerate the folding of proteins. It catalyzes the cis-trans isomerization of proline imidic peptide bonds in oligopeptides.,similarity:Belongs to the FKBP-type PPIase family. FKBP1 subfamily.,similarity:Contains 1 PPIase FKBP-type domain.,tissue specificity:Ubiquitous for both isoforms with highest levels in brain and thymus.,

Subcellular Location :

Cytoplasm . Sarcoplasmic reticulum .

Expression :

Detected in heart muscle (at protein level). Isoform 1 and isoform 2 are ubiquitous with highest levels in brain and thymus.

Sort :

6131

No4 :

1

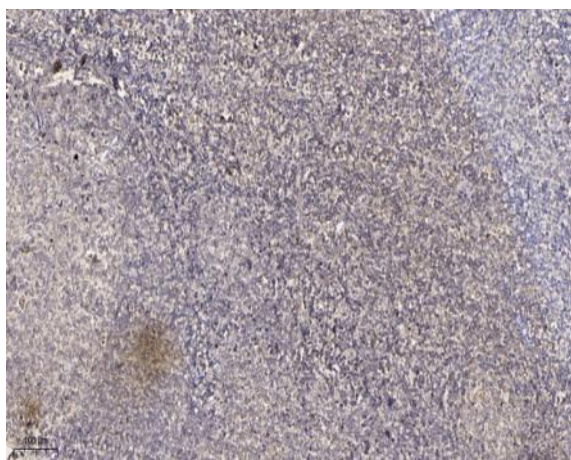
Host :

Rabbit

Modifications :

Unmodified

Products Images



Immunohistochemical analysis of paraffin-embedded human tonsil. 1, Antibody was diluted at 1:200(4° overnight). 2, Tris-EDTA,pH9.0 was used for antigen retrieval. 3,Secondary antibody was diluted at 1:200(room temperature, 30min).