

## Resistin Polyclonal Antibody

<b>Catalog No :</b>	YT6277
<b>Reactivity :</b>	Human;Mouse
<b>Applications :</b>	IHC;ELISA
<b>Target :</b>	Resistin
<b>Gene Name :</b>	RETN FIZZ3 HXCP1 RSTN UNQ407/PRO1199
<b>Protein Name :</b>	Resistin
<b>Human Gene Id :</b>	56729
<b>Human Swiss Prot No :</b>	Q9HD89
<b>Immunogen :</b>	Synthesized peptide derived from human Resistin AA range: 1-50
<b>Specificity :</b>	This antibody detects endogenous levels of human Resistin
<b>Formulation :</b>	Liquid in PBS containing 50% glycerol, 0.5% BSA and 0.02% sodium azide.
<b>Source :</b>	Polyclonal, Rabbit,IgG
<b>Dilution :</b>	IHC 1:50-200, ELISA(peptide)1:5000-20000
<b>Purification :</b>	The antibody was affinity-purified from rabbit antiserum by affinity-chromatography using epitope-specific immunogen.
<b>Concentration :</b>	1 mg/ml
<b>Storage Stability :</b>	-15°C to -25°C/1 year(Do not lower than -25°C)
<b>Background :</b>	This gene belongs to the family defined by the mouse resistin-like genes. The characteristic feature of this family is the C-terminal stretch of 10 cys residues with identical spacing. The mouse homolog of this protein is secreted by adipocytes, and may be the hormone potentially linking obesity to type II diabetes. Alternatively spliced transcript variants encoding the same protein have been

---

found for this gene. [provided by RefSeq, Jul 2010],

---

**Function :** function:Hormone that seems to suppress insulin ability to stimulate glucose uptake into adipose cells. Potentially links obesity to diabetes.,similarity:Belongs to the resistin/FIZZ family.,subunit:Homodimer; disulfide-linked.,tissue specificity:Expressed only in fatty tissues.,

---

**Subcellular Location :** Secreted .

---

**Expression :** Expressed in white adipose tissue (at protein level) (PubMed:11201732). Widely expressed, with particularly strong expression in lung, bone marrow, breast and peripheral blood (PubMed:15248836). Expressed strongly in bone marrow and at lower levels in lung, but not detected in other tissues (PubMed:15064728). Isoform 2 is detected in adipose tissue, bone marrow, brain, lung, peripheral blood, placenta and thymus (PubMed:15248836).

---

**Sort :** 14392

---

**No4 :** 1

---

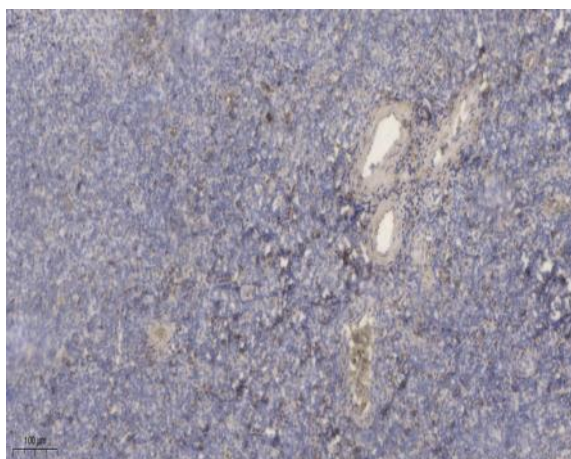
**Host :** Rabbit

---

**Modifications :** Unmodified

---

## Products Images



Immunohistochemical analysis of paraffin-embedded human tonsil. 1, Antibody was diluted at 1:200(4° overnight). 2, Tris-EDTA,pH9.0 was used for antigen retrieval. 3,Secondary antibody was diluted at 1:200(room temperature, 30min).