

## GNG4 Polyclonal Antibody

<b>Catalog No :</b>	YT6270
<b>Reactivity :</b>	Human;Mouse
<b>Applications :</b>	IHC;ELISA
<b>Target :</b>	GNG4
<b>Fields :</b>	>>Ras signaling pathway;>>Chemokine signaling pathway;>>PI3K-Akt signaling pathway;>>Apelin signaling pathway;>>Circadian entrainment;>>Retrograde endocannabinoid signaling;>>Glutamatergic synapse;>>Cholinergic synapse;>>Serotonergic synapse;>>GABAergic synapse;>>Dopaminergic synapse;>>Relaxin signaling pathway;>>Morphine addiction;>>Alcoholism;>>Human cytomegalovirus infection;>>Kaposi sarcoma-associated herpesvirus infection;>>Human immunodeficiency virus 1 infection;>>Pathways in cancer
<b>Gene Name :</b>	GNG4 GNGT4
<b>Protein Name :</b>	GNG4
<b>Human Gene Id :</b>	2786
<b>Human Swiss Prot No :</b>	P50150
<b>Immunogen :</b>	Synthesized peptide derived from human GNG4 AA range: 1-50
<b>Specificity :</b>	This antibody detects endogenous levels of human GNG4
<b>Formulation :</b>	Liquid in PBS containing 50% glycerol, 0.5% BSA and 0.02% sodium azide.
<b>Source :</b>	Polyclonal, Rabbit,IgG
<b>Dilution :</b>	IHC 1:50-200, ELISA(peptide)1:5000-20000
<b>Purification :</b>	The antibody was affinity-purified from rabbit antiserum by affinity-chromatography using epitope-specific immunogen.  1 mg/ml

**Storage & Stability :** -15°C to -25°C/1 year(Do not lower than -25°C)

**Background :** function:Guanine nucleotide-binding proteins (G proteins) are involved as a modulator or transducer in various transmembrane signaling systems. The beta and gamma chains are required for the GTPase activity, for replacement of GDP by GTP, and for G protein-effector interaction.,similarity:Belongs to the G protein gamma family.,subunit:G proteins are composed of 3 units, alpha, beta and gamma. Interacts with beta-1 and beta-2, but not with beta-3.,tissue specificity:Brain, kidney, pancreas, skeletal muscle and faintly in cardiac muscle.,

**Function :** function:Guanine nucleotide-binding proteins (G proteins) are involved as a modulator or transducer in various transmembrane signaling systems. The beta and gamma chains are required for the GTPase activity, for replacement of GDP by GTP, and for G protein-effector interaction.,similarity:Belongs to the G protein gamma family.,subunit:G proteins are composed of 3 units, alpha, beta and gamma. Interacts with beta-1 and beta-2, but not with beta-3.,tissue specificity:Brain, kidney, pancreas, skeletal muscle and faintly in cardiac muscle.,

**Subcellular Location :** Cell membrane ; Lipid-anchor ; Cytoplasmic side .

**Expression :** Brain, kidney, pancreas, skeletal muscle and faintly in cardiac muscle.

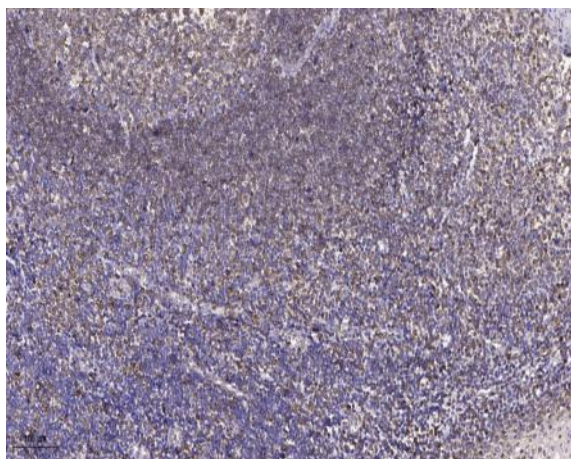
**Sort :** 6674

**No4 :** 1

**Host :** Rabbit

**Modifications :** Unmodified

## Products Images



Immunohistochemical analysis of paraffin-embedded human tonsil. 1, Antibody was diluted at 1:200(4° overnight). 2, Tris-EDTA,pH9.0 was used for antigen retrieval. 3,Secondary antibody was diluted at 1:200(room temperature, 45min).