

ELOF1 Polyclonal Antibody

Catalog No :	YT6263
Reactivity :	Human;Mouse;Rat
Applications :	IHC;ELISA
Target :	ELOF1
Gene Name :	ELOF1
Protein Name :	ELOF1
Human Gene Id :	84337
Human Swiss Prot No :	P60002
Immunogen :	Synthesized peptide derived from human ELOF1 AA range: 30-110
Specificity :	This antibody detects endogenous levels of human ELOF1
Formulation :	Liquid in PBS containing 50% glycerol, 0.5% BSA and 0.02% sodium azide.
Source :	Polyclonal, Rabbit,IgG
Dilution :	IHC 1:50-200, ELISA(peptide)1:5000-20000
Purification :	The antibody was affinity-purified from rabbit antiserum by affinity-chromatography using epitope-specific immunogen.
Concentration :	1 mg/ml
Storage Stability :	-15°C to -25°C/1 year(Do not lower than -25°C)
Background :	function:Transcription elongation factor implicated in the maintenance of proper chromatin structure in actively transcribed regions.,similarity:Belongs to the ELOF1 family.,
Function :	function:Transcription elongation factor implicated in the maintenance of proper

chromatin structure in actively transcribed regions.,similarity:Belongs to the ELOF1 family.,

Subcellular Location :

Nucleus .

Expression :

Muscle,

Sort :

5516

No4 :

1

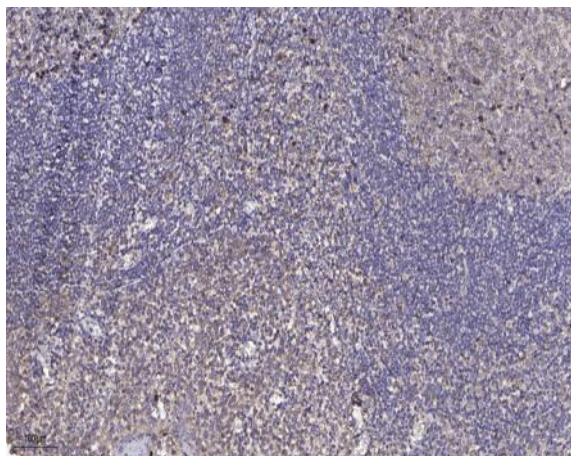
Host :

Rabbit

Modifications :

Unmodified

Products Images



Immunohistochemical analysis of paraffin-embedded human tonsil. 1, Antibody was diluted at 1:200(4° overnight). 2, Tris-EDTA,pH9.0 was used for antigen retrieval. 3,Secondary antibody was diluted at 1:200(room temperature, 45min).