

COX6B2 Polyclonal Antibody

Catalog No :	YT6260
Reactivity :	Human;Rat;Mouse;
Applications :	IHC;ELISA
Target :	COX6B2
Fields :	>>Oxidative phosphorylation;>>Metabolic pathways;>>Cardiac muscle contraction;>>Thermogenesis;>>Non-alcoholic fatty liver disease;>>Alzheimer disease;>>Parkinson disease;>>Amyotrophic lateral sclerosis;>>Huntington disease;>>Prion disease;>>Pathways of neurodegeneration - multiple diseases;>>Chemical carcinogenesis - reactive oxygen species;>>Diabetic cardiomyopathy
Gene Name :	COX6B2
Protein Name :	COX6B2
Human Gene Id :	125965
Human Swiss Prot No :	Q6YFQ2
Immunogen :	Synthesized peptide derived from human COX6B2 AA range: 40-120
Specificity :	This antibody detects endogenous levels of human COX6B2
Formulation :	Liquid in PBS containing 50% glycerol, 0.5% BSA and 0.02% sodium azide.
Source :	Polyclonal, Rabbit,IgG
Dilution :	IHC 1:50-200, ELISA(peptide)1:5000-20000
Purification :	The antibody was affinity-purified from rabbit antiserum by affinity-chromatography using epitope-specific immunogen.
Concentration :	1 mg/ml

Storage Stability : -15°C to -25°C/1 year(Do not lower than -25°C)

Background : function:Connects the two COX monomers into the physiological dimeric form.,similarity:Belongs to the cytochrome c oxidase subunit 6B family.,tissue specificity:Testis specific. Weak expression in thymus and heart. Expressed in cancer cell lines.,

Function : function:Connects the two COX monomers into the physiological dimeric form.,similarity:Belongs to the cytochrome c oxidase subunit 6B family.,tissue specificity:Testis specific. Weak expression in thymus and heart. Expressed in cancer cell lines.,

Subcellular Location : Mitochondrion inner membrane ; Peripheral membrane protein ; Intermembrane side .

Expression : Testis specific. Weak expression in thymus and heart. Expressed in cancer cell lines.

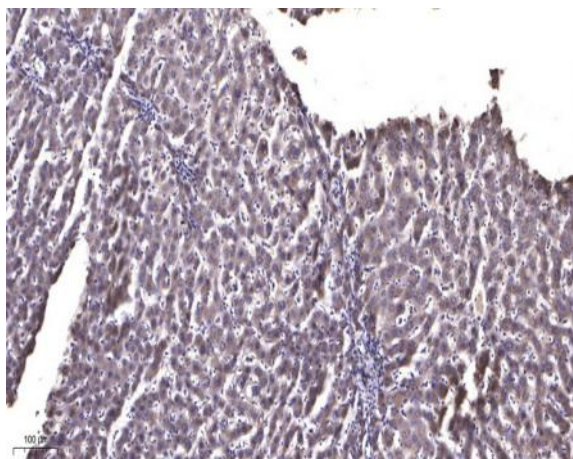
Sort : 4490

No4 : 1

Host : Rabbit

Modifications : Unmodified

Products Images



Immunohistochemical analysis of paraffin-embedded human liver cancer. 1, Antibody was diluted at 1:200(4° overnight). 2, Tris-EDTA,pH9.0 was used for antigen retrieval. 3,Secondary antibody was diluted at 1:200(room temperature, 45min).