

LSM2 Polyclonal Antibody

Catalog No :	YT6259
Reactivity :	Human;Mouse;Rat
Applications :	WB;IHC;IF;ELISA
Target :	LSM2
Fields :	>>RNA degradation;>>Spliceosome
Gene Name :	LSM2 C6orf28 G7B
Protein Name :	LSM2
Human Gene Id :	57819
Human Swiss Prot No :	Q9Y333
Immunogen :	Synthesized peptide derived from human LSM2 AA range: 33-83
Specificity :	This antibody detects endogenous levels of human LSM2
Formulation :	Liquid in PBS containing 50% glycerol, 0.5% BSA and 0.02% sodium azide.
Source :	Polyclonal, Rabbit,IgG
Dilution :	WB 1:500 - 1:2000. IHC 1:100 - 1:300. IF 1:200 - 1:1000. ELISA: 1:5000. Not yet tested in other applications.
Purification :	The antibody was affinity-purified from rabbit antiserum by affinity-chromatography using epitope-specific immunogen.
Concentration :	1 mg/ml
Storage Stability :	-15°C to -25°C/1 year(Do not lower than -25°C)
Molecularweight :	11kD

Background : This gene encodes a member of the LSm family of RNA-binding proteins. LSm proteins form stable heteromers that bind specifically to the 3'-terminal oligo(U) tract of U6 snRNA and may play a role in pre-mRNA splicing by mediating U4/U6 snRNP formation. Pseudogenes of this gene are located on the short arm of chromosomes 6 and 19. [provided by RefSeq, Nov 2011],

Function : function: Binds specifically to the 3'-terminal U-tract of U6 snRNA. May be involved in pre-mRNA splicing., PTM: Phosphorylated upon DNA damage, probably by ATM or ATR., similarity: Belongs to the snRNP Sm proteins family., subunit: Identified in the spliceosome C complex, at least composed of AQR, ASCC3L1, C19orf29, CDC40, CDC5L, CRNKL1, DDX23, DDX41, DDX48, DDX5, DGCR14, DHX35, DHX38, DHX8, EFTUD2, FRG1, GPATC1, HNRPA1, HNRPA2B1, HNRPA3, HNRPC, HNRPF, HNRPH1, HNRPK, HNRPM, HNRPR, HNRPU, KIAA1160, KIAA1604, LSM2, LSM3, MAGOH, MORG1, PABPC1, PLRG1, PNN, PPIE, PPIL1, PPIL3, PPWD1, PRPF19, PRPF4B, PRPF6, PRPF8, RALY, RBM22, RBM8A, RBMX, SART1, SF3A1, SF3A2, SF3A3, SF3B1, SF3B2, SF3B3, SFRS1, SKIV2L2, SNRPA1, SNRPB, SNRPB2, SNRPD1, SNRPD2, SNRPD3, SNRPE, SNRPF, SNRPG, SNW1, SRRM1, SRRM2, SYF2, SYNCRIP, TFIP11, THOC4, U2AF1, WDR57, XAB2 and ZCCHC8. LSm subunits form a heteromer with a donut shape.,

Subcellular Location : Nucleus .

Expression : Hypothalamus, Placenta,

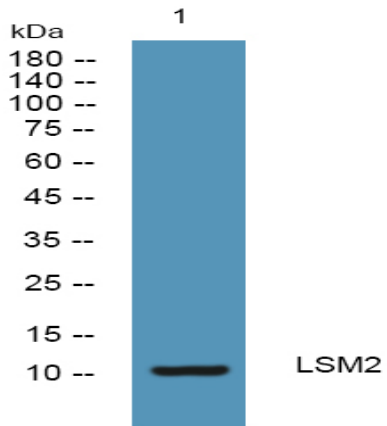
Sort : 9274

No4 : 1

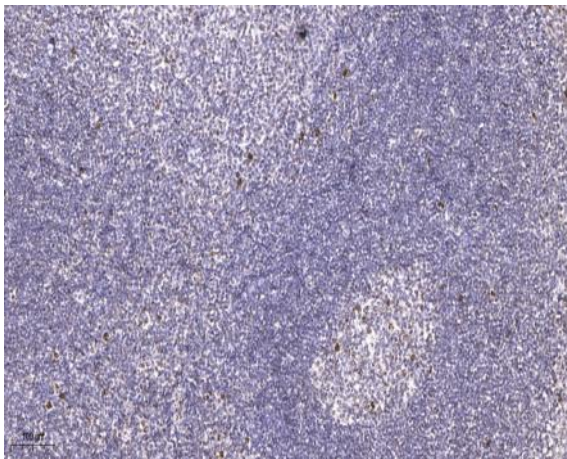
Host : Rabbit

Modifications : Unmodified

Products Images



Western blot analysis of lysates from Jurkat cells, primary antibody was diluted at 1:1000, 4° over night



Immunohistochemical analysis of paraffin-embedded human tonsil. 1, Antibody was diluted at 1:200(4° overnight). 2, Tris-EDTA,pH9.0 was used for antigen retrieval. 3,Secondary antibody was diluted at 1:200(room temperature, 45min).