

APOC1 Polyclonal Antibody

Catalog No :	YT6255
Reactivity :	Human;Rat;Mouse;
Applications :	IHC;ELISA
Target :	APOC1
Fields :	>>Cholesterol metabolism
Gene Name :	APOC1 APOC1B
Protein Name :	APOC1
Human Gene Id :	341
Human Swiss Prot No :	P02654
Immunogen :	Synthesized peptide derived from human APOC1 AA range: 1-50
Specificity :	This antibody detects endogenous levels of human APOC1
Formulation :	Liquid in PBS containing 50% glycerol, 0.5% BSA and 0.02% sodium azide.
Source :	Polyclonal, Rabbit,IgG
Dilution :	IHC 1:50-200, ELISA(peptide)1:5000-20000
Purification :	The antibody was affinity-purified from rabbit antiserum by affinity-chromatography using epitope-specific immunogen.
Concentration :	1 mg/ml
Storage Stability :	-15°C to -25°C/1 year(Do not lower than -25°C)
Background :	This gene encodes a member of the apolipoprotein C1 family. This gene is expressed primarily in the liver, and it is activated when monocytes differentiate into macrophages. The encoded protein plays a central role in high density

lipoprotein (HDL) and very low density lipoprotein (VLDL) metabolism. This protein has also been shown to inhibit cholesteryl ester transfer protein in plasma. A pseudogene of this gene is located 4 kb downstream in the same orientation, on the same chromosome. This gene is mapped to chromosome 19, where it resides within a apolipoprotein gene cluster. Alternative splicing and the use of alternative promoters results in multiple transcript variants. [provided by RefSeq, Sep 2016],

Function :

function:Appears to modulate the interaction of APOE with beta-migrating VLDL and inhibit binding of beta-VLDL to the LDL receptor-related protein.,miscellaneous:Apo-CI makes up about 10% of the protein of the VLDL (very low density lipoprotein) and 2% of that of HDL (high density lipoprotein).,online information:Apolipoprotein C1 entry,similarity:Belongs to the apolipoprotein C1 family.,tissue specificity:Synthesized mainly in liver and to a minor degree in intestine. Secreted in plasma.,

Subcellular Location :

Secreted .

Expression :

Synthesized mainly in liver and to a minor degree in intestine. Also found in the lung and spleen.

Sort :

2153

No4 :

1

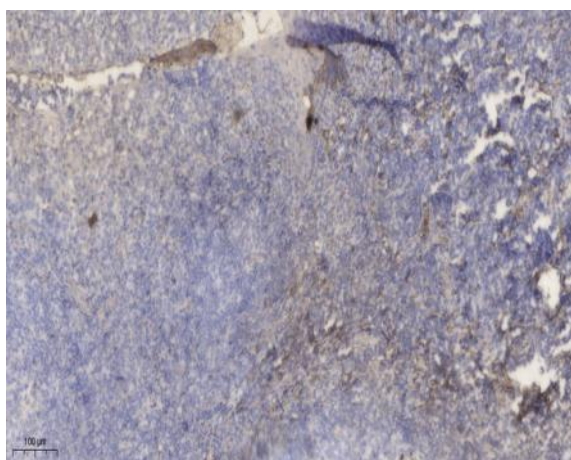
Host :

Rabbit

Modifications :

Unmodified

Products Images



Immunohistochemical analysis of paraffin-embedded human tonsil. 1, Antibody was diluted at 1:200(4° overnight). 2, Tris-EDTA,pH9.0 was used for antigen retrieval. 3,Secondary antibody was diluted at 1:200(room temperature, 30min).