

WIT1 Polyclonal Antibody

Catalog No :	YT6253
Reactivity :	Human
Applications :	WB;IHC;IF;ELISA
Target :	WIT1
Gene Name :	WT1-AS WIT1
Protein Name :	WIT1
Human Swiss Prot No :	Q06250
Immunogen :	Synthesized peptide derived from human WIT1 AA range: 20-100
Specificity :	This antibody detects endogenous levels of human WIT1
Formulation :	Liquid in PBS containing 50% glycerol, 0.5% BSA and 0.02% sodium azide.
Source :	Polyclonal, Rabbit,IgG
Dilution :	WB 1:500 - 1:2000. IHC 1:100 - 1:300. ELISA: 1:10000.. IF 1:50-200
Purification :	The antibody was affinity-purified from rabbit antiserum by affinity-chromatography using epitope-specific immunogen.
Concentration :	1 mg/ml
Storage Stability :	-15°C to -25°C/1 year(Do not lower than -25°C)
Molecularweight :	10kD
Background :	This gene is located upstream of the Wilms tumor 1 (WT1) gene; these two genes are bi-directionally transcribed from the same promoter region. This gene is imprinted in kidney, with preferential expression from the paternal allele. Imprinting defects at chromosome 11p13 may contribute to tumorigenesis. [provided by RefSeq, May 2014],

Function : cell proliferation,

Expression : Kidney,Placenta,Uterus,

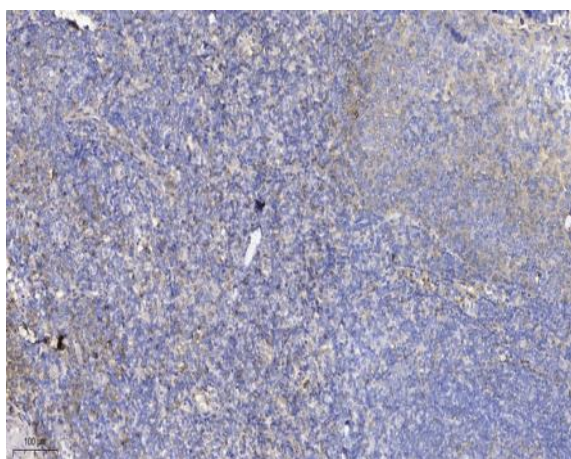
Sort : 24303

No4 : 1

Host : Rabbit

Modifications : Unmodified

Products Images



Immunohistochemical analysis of paraffin-embedded human tonsil. 1, Antibody was diluted at 1:200(4° overnight). 2, Tris-EDTA,pH9.0 was used for antigen retrieval. 3,Secondary antibody was diluted at 1:200(room temperature, 30min).