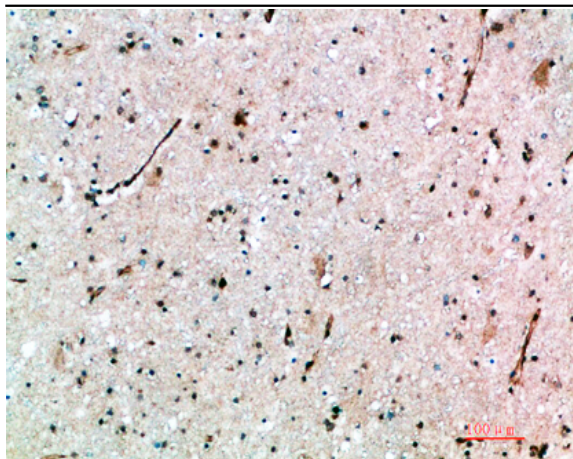


AVP Receptor V3 Polyclonal Antibody

Catalog No :	YT6001
Reactivity :	Human;Mouse;Rat
Applications :	IHC;IF;ELISA
Target :	AVP Receptor V3
Fields :	>>Calcium signaling pathway;>>Phospholipase D signaling pathway;>>Neuroactive ligand-receptor interaction;>>Vascular smooth muscle contraction
Gene Name :	AVPR1B AVPR3 VPR3
Protein Name :	Vasopressin V1b receptor (V1bR) (AVPR V1b) (AVPR V3) (Antidiuretic hormone receptor 1b) (Vasopressin V3 receptor)
Human Gene Id :	553
Human Swiss Prot No :	P47901
Mouse Gene Id :	26361
Mouse Swiss Prot No :	Q9WU02
Rat Swiss Prot No :	P48974
Immunogen :	The antiserum was produced against synthesized peptide derived from the Internal region of human AVPR1B. AA range:271-320
Specificity :	The antibody detects endogenous AVP Receptor V3
Formulation :	Liquid in PBS containing 50% glycerol, 0.5% BSA and 0.02% sodium azide.
Source :	Polyclonal, Rabbit,IgG
Dilution :	IHC 1:50-200, ELISA 1:10000-20000. IF 1:50-200

Purification :	The antibody was affinity-purified from rabbit antiserum by affinity-chromatography using epitope-specific immunogen.
Concentration :	1 mg/ml
Storage Stability :	-15°C to -25°C/1 year(Do not lower than -25°C)
Cell Pathway :	Calcium;Neuroactive ligand-receptor interaction;Vascular smooth muscle contraction;
Background :	The protein encoded by this gene acts as receptor for arginine vasopressin. This receptor belongs to the subfamily of G-protein coupled receptors which includes AVPR1A, V2R and OXT receptors. Its activity is mediated by G proteins which stimulate a phosphatidylinositol-calcium second messenger system. The receptor is primarily located in the anterior pituitary, where it stimulates ACTH release. It is expressed at high levels in ACTH-secreting pituitary adenomas as well as in bronchial carcinoids responsible for the ectopic ACTH syndrome. A spliced antisense transcript of this gene has been reported but its function is not known. [provided by RefSeq, Jul 2008],
Function :	function:Receptor for arginine vasopressin. The activity of this receptor is mediated by G proteins which activate a phosphatidyl-inositol-calcium second messenger system.,similarity:Belongs to the G-protein coupled receptor 1 family.,
Subcellular Location :	Cell membrane ; Multi-pass membrane protein .
Expression :	Lung carcinoma,Pituitary,
Sort :	2527
No4 :	1
Host :	Rabbit
Modifications :	Unmodified

Products Images



Immunohistochemical analysis of paraffin-embedded human-brain, antibody was diluted at 1:200