

GNG12 Polyclonal Antibody

Catalog No :	YT6251
Reactivity :	Human;Mouse
Applications :	IHC;ELISA
Target :	GNG12
Fields :	>>MAPK signaling pathway;>>Ras signaling pathway;>>Chemokine signaling pathway;>>PI3K-Akt signaling pathway;>>Apelin signaling pathway;>>Circadian entrainment;>>Retrograde endocannabinoid signaling;>>Glutamatergic synapse;>>Cholinergic synapse;>>Serotonergic synapse;>>GABAergic synapse;>>Dopaminergic synapse;>>Regulation of actin cytoskeleton;>>Relaxin signaling pathway;>>Morphine addiction;>>Alcoholism;>>Human cytomegalovirus infection;>>Kaposi sarcoma-associated herpesvirus infection;>>Human immunodeficiency virus 1 infection;>>Pathways in cancer
Gene Name :	GNG12
Protein Name :	GNG12
Human Gene Id :	55970
Human Swiss Prot No :	Q9UBI6
Immunogen :	Synthesized peptide derived from human GNG12 AA range: 1-50
Specificity :	This antibody detects endogenous levels of human GNG12
Formulation :	Liquid in PBS containing 50% glycerol, 0.5% BSA and 0.02% sodium azide.
Source :	Polyclonal, Rabbit,IgG
Dilution :	IHC 1:50-200, ELISA(peptide)1:5000-20000
Purification :	The antibody was affinity-purified from rabbit antiserum by affinity-chromatography using epitope-specific immunogen. 1 mg/ml

Storage & Stability : -15°C to -25°C/1 year (Do not lower than -25°C)

Molecular weight : 8kD

Background : function:Guanine nucleotide-binding proteins (G proteins) are involved as a modulator or transducer in various transmembrane signaling systems. The beta and gamma chains are required for the GTPase activity, for replacement of GDP by GTP, and for G protein-effector interaction.,similarity:Belongs to the G protein gamma family.,subunit:G proteins are composed of 3 units, alpha, beta and gamma.,

Function : function:Guanine nucleotide-binding proteins (G proteins) are involved as a modulator or transducer in various transmembrane signaling systems. The beta and gamma chains are required for the GTPase activity, for replacement of GDP by GTP, and for G protein-effector interaction.,similarity:Belongs to the G protein gamma family.,subunit:G proteins are composed of 3 units, alpha, beta and gamma.,

Subcellular Location : Cell membrane ; Lipid-anchor ; Cytoplasmic side .

Expression : Adrenal gland,Brain,Epithelium,Human small intestine,Melanoma,Uterus,

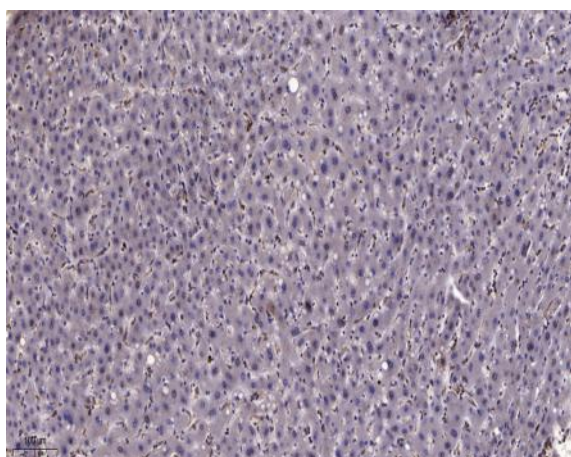
Sort : 6671

No4 : 1

Host : Rabbit

Modifications : Unmodified

Products Images



Immunohistochemical analysis of paraffin-embedded human liver cancer. 1, Antibody was diluted at 1:200(4° overnight). 2, Tris-EDTA,pH9.0 was used for antigen retrieval. 3,Secondary antibody was diluted at 1:200(room temperature, 45min).