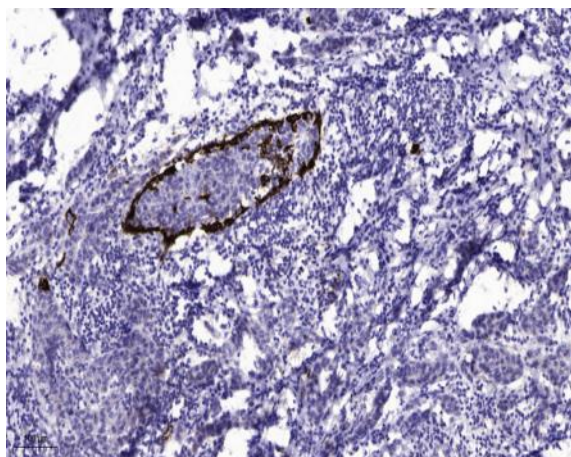


GNG13 Polyclonal Antibody

Catalog No :	YT6250
Reactivity :	Human;Mouse
Applications :	IHC;ELISA
Target :	GNG13
Fields :	>>Ras signaling pathway;>>Chemokine signaling pathway;>>PI3K-Akt signaling pathway;>>Apelin signaling pathway;>>Circadian entrainment;>>Retrograde endocannabinoid signaling;>>Glutamatergic synapse;>>Cholinergic synapse;>>Serotonergic synapse;>>GABAergic synapse;>>Dopaminergic synapse;>>Olfactory transduction;>>Taste transduction;>>Relaxin signaling pathway;>>Morphine addiction;>>Alcoholism;>>Human cytomegalovirus infection;>>Kaposi sarcoma-associated herpesvirus infection;>>Human immunodeficiency virus 1 infection;>>Pathways in cancer
Gene Name :	GNG13
Protein Name :	GNG13
Human Gene Id :	51764
Human Swiss Prot No :	Q9P2W3
Immunogen :	Synthesized peptide derived from human GNG13 AA range: 1-50
Specificity :	This antibody detects endogenous levels of human GNG13
Formulation :	Liquid in PBS containing 50% glycerol, 0.5% BSA and 0.02% sodium azide.
Source :	Polyclonal, Rabbit,IgG
Dilution :	IHC 1:50-200, ELISA(peptide)1:5000-20000
Purification :	The antibody was affinity-purified from rabbit antiserum by affinity-chromatography using epitope-specific immunogen.

Concentration :	1 mg/ml
Storage Stability :	-15°C to -25°C/1 year(Do not lower than -25°C)
Background :	Heterotrimeric G proteins, which consist of alpha (see MIM 139320), beta (see MIM 139380), and gamma subunits, function as signal transducers for the 7-transmembrane-helix G protein-coupled receptors. GNG13 is a gamma subunit that is expressed in taste, retinal, and neuronal tissues and plays a key role in taste transduction (Li et al., 2006 [PubMed 16473877]).[supplied by OMIM, Oct 2009],
Function :	function:Guanine nucleotide-binding proteins (G proteins) are involved as a modulator or transducer in various transmembrane signaling systems. The beta and gamma chains are required for the GTPase activity, for replacement of GDP by GTP, and for G protein-effector interaction.,similarity:Belongs to the G protein gamma family.,subunit:G proteins are composed of 3 units, alpha, beta and gamma.,
Subcellular Location :	Cell membrane ; Lipid-anchor ; Cytoplasmic side .
Expression :	Brain,Cerebellum,
Sort :	6672
No4 :	1
Host :	Rabbit
Modifications :	Unmodified

Products Images



Immunohistochemical analysis of paraffin-embedded human Breast cancer. 1, Antibody was diluted at 1:200(4° overnight). 2, Tris-EDTA,pH9.0 was used for antigen retrieval. 3,Secondary antibody was diluted at 1:200(room temperature, 45min).