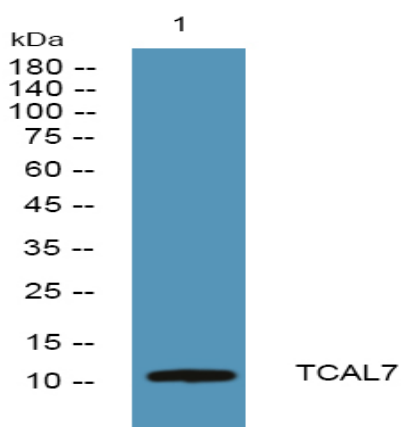


## TCEAL7 Polyclonal Antibody

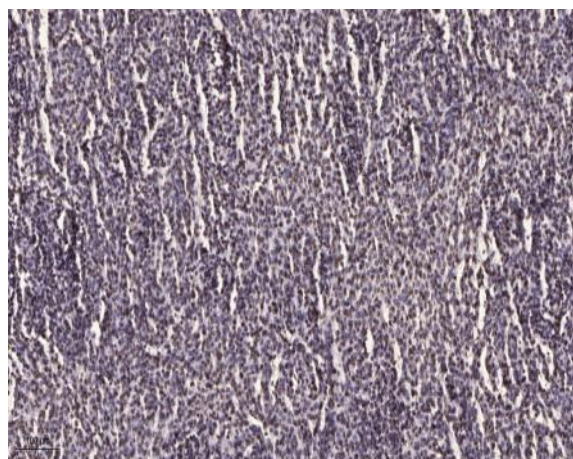
<b>Catalog No :</b>	YT6247
<b>Reactivity :</b>	Human;Mouse
<b>Applications :</b>	WB;IHC;IF;ELISA
<b>Target :</b>	TCEAL7
<b>Gene Name :</b>	TCEAL7
<b>Protein Name :</b>	TCEAL7
<b>Human Gene Id :</b>	56849
<b>Human Swiss Prot No :</b>	Q9BRU2
<b>Immunogen :</b>	Synthesized peptide derived from human TCEAL7 AA range: 34-84
<b>Specificity :</b>	This antibody detects endogenous levels of human TCEAL7
<b>Formulation :</b>	Liquid in PBS containing 50% glycerol, 0.5% BSA and 0.02% sodium azide.
<b>Source :</b>	Polyclonal, Rabbit,IgG
<b>Dilution :</b>	WB 1:500 - 1:2000. IHC 1:100 - 1:300. IF 1:200 - 1:1000. ELISA: 1:5000. Not yet tested in other applications.
<b>Purification :</b>	The antibody was affinity-purified from rabbit antiserum by affinity-chromatography using epitope-specific immunogen.
<b>Concentration :</b>	1 mg/ml
<b>Storage Stability :</b>	-15°C to -25°C/1 year(Do not lower than -25°C)
<b>Molecularweight :</b>	12kD
<b>Background :</b>	function:May be involved in transcriptional regulation.,similarity:Belongs to the TFS-II family. TFA subfamily.,

<b>Function :</b>	function:May be involved in transcriptional regulation.,similarity:Belongs to the TFS-II family. TFA subfamily.,
<b>Subcellular Location :</b>	Nucleus .
<b>Expression :</b>	Highly expressed in normal and fetal brain tissues, and weakly expressed in uterus and ovary. Down-regulated in epithelial ovarian, cervical, prostate, breast, brain and lung cancer cell lines and in brain and ovarian tumors.
<b>Sort :</b>	16991
<b>No4 :</b>	1
<b>Host :</b>	Rabbit
<b>Modifications :</b>	Unmodified

## Products Images



Western blot analysis of lysates from SH-SY5Y cells, primary antibody was diluted at 1:1000, 4° over night



Immunohistochemical analysis of paraffin-embedded human brain tumor. 1, Antibody was diluted at 1:200(4° overnight). 2, Tris-EDTA,pH9.0 was used for antigen retrieval. 3,Secondary antibody was diluted at 1:200(room temperature, 45min).