

## SEC61B Polyclonal Antibody

<b>Catalog No :</b>	YT6246
<b>Reactivity :</b>	Human;Mouse;Rat
<b>Applications :</b>	IHC;ELISA
<b>Target :</b>	SEC61B
<b>Fields :</b>	>>Protein export;>>Protein processing in endoplasmic reticulum;>>Phagosome;>>Vibrio cholerae infection
<b>Gene Name :</b>	SEC61B
<b>Protein Name :</b>	SEC61B
<b>Human Gene Id :</b>	10952
<b>Human Swiss Prot No :</b>	P60468
<b>Immunogen :</b>	Synthesized peptide derived from human SEC61B AA range: 30-110
<b>Specificity :</b>	This antibody detects endogenous levels of human SEC61B
<b>Formulation :</b>	Liquid in PBS containing 50% glycerol, 0.5% BSA and 0.02% sodium azide.
<b>Source :</b>	Polyclonal, Rabbit,IgG
<b>Dilution :</b>	IHC 1:50-200, ELISA(peptide)1:5000-20000
<b>Purification :</b>	The antibody was affinity-purified from rabbit antiserum by affinity-chromatography using epitope-specific immunogen.
<b>Concentration :</b>	1 mg/ml
<b>Storage Stability :</b>	-15°C to -25°C/1 year(Do not lower than -25°C)
<b>Background :</b>	The Sec61 complex is the central component of the protein translocation apparatus of the endoplasmic reticulum (ER) membrane. Oligomers of the Sec61

complex form a transmembrane channel where proteins are translocated across and integrated into the ER membrane. This complex consists of three membrane proteins- alpha, beta, and gamma. This gene encodes the beta-subunit protein. The Sec61 subunits are also observed in the post-ER compartment, suggesting that these proteins can escape the ER and recycle back. There is evidence for multiple polyadenylated sites for this transcript. [provided by RefSeq, Jul 2008],

---

**Function :**

function:Necessary for protein translocation in the endoplasmic reticulum.,similarity:Belongs to the SEC61-beta family.,subunit:Heterotrimeric complex composed of SEC61-alpha, SEC61-beta and SEC61-gamma. Part of a complex composed of SEC61, SEC62 and SEC63. Interacts with SEC62.,

---

**Subcellular Location :**

Endoplasmic reticulum membrane ; Single-pass membrane protein .

---

**Expression :**

Brain,Embryonic kidney,Epithelium,Stomach mucosa,

---

**Sort :**

16203

---

**No4 :**

1

---

**Host :**

Rabbit

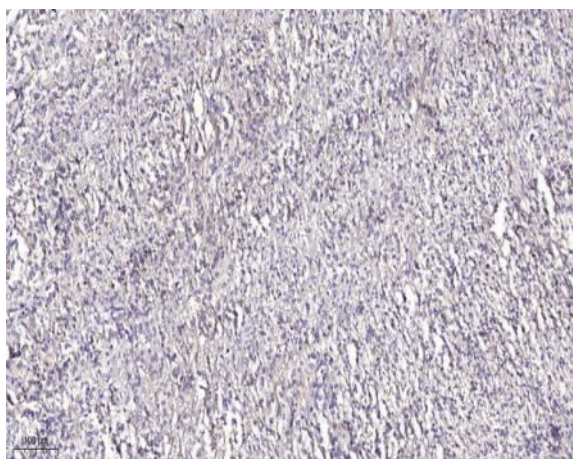
---

**Modifications :**

Unmodified

---

## Products Images



Immunohistochemical analysis of paraffin-embedded human Colon cancer. 1, Antibody was diluted at 1:200(4° overnight). 2, Tris-EDTA,pH9.0 was used for antigen retrieval. 3,Secondary antibody was diluted at 1:200(room temperature, 45min).