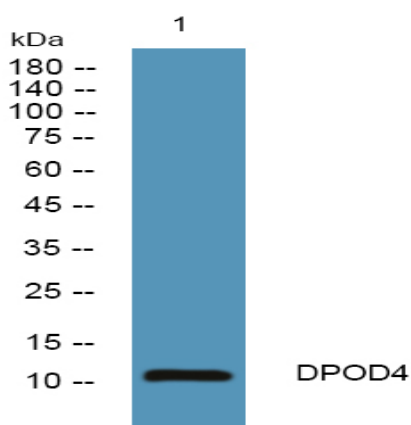


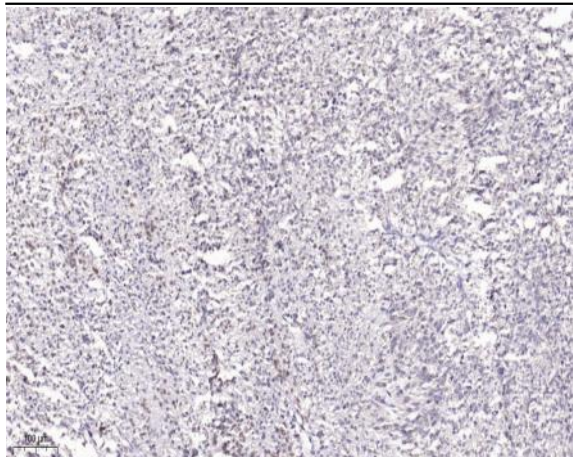
POLD4 Polyclonal Antibody

Catalog No :	YT6244
Reactivity :	Human;Mouse
Applications :	WB;IHC;IF;ELISA
Target :	POLD4
Fields :	>>DNA replication;>>Base excision repair;>>Nucleotide excision repair;>>Mismatch repair;>>Homologous recombination
Gene Name :	POLD4 POLDS
Protein Name :	POLD4
Human Gene Id :	57804
Human Swiss Prot No :	Q9HCU8
Immunogen :	Synthesized peptide derived from human POLD4 AA range: 43-93
Specificity :	This antibody detects endogenous levels of human POLD4
Formulation :	Liquid in PBS containing 50% glycerol, 0.5% BSA and 0.02% sodium azide.
Source :	Polyclonal, Rabbit,IgG
Dilution :	WB 1:500 - 1:2000. IHC 1:100 - 1:300. IF 1:200 - 1:1000. ELISA: 1:5000. Not yet tested in other applications.
Purification :	The antibody was affinity-purified from rabbit antiserum by affinity-chromatography using epitope-specific immunogen.
Concentration :	1 mg/ml
Storage Stability :	-15°C to -25°C/1 year(Do not lower than -25°C)
Molecularweight :	12kD

Background :	This gene encodes the smallest subunit of DNA polymerase delta. DNA polymerase delta possesses both polymerase and 3' to 5' exonuclease activity and plays a critical role in DNA replication and repair. The encoded protein enhances the activity of DNA polymerase delta and plays a role in fork repair and stabilization through interactions with the DNA helicase Bloom syndrome protein. Alternatively spliced transcript variants encoding multiple isoforms have been observed for this gene. [provided by RefSeq, Mar 2012],
Function :	function:Required for optimal DNA polymerase delta activity. May contribute to PCNA-dependent activity of DNA polymerase delta.,similarity:Belongs to the DNA polymerase delta subunit 4 family.,subunit:Heterotetramer composed of subunits of 125 kDa, 50 kDa, 66 kDa and 12 kDa. Interacts with WRNIP1. Interacts with POLD4, POLD2, POLD1 and PCNA.,
Subcellular Location :	Nucleus . Partially recruited to DNA damage sites within 2 hours following UV irradiation, before degradation. .
Expression :	Brain,Cervix,Ovarian carcinoma,Pooled,
Sort :	12880
No4 :	1
Host :	Rabbit
Modifications :	Unmodified

Products Images





Immunohistochemical analysis of paraffin-embedded human Small intestinal stromal tumor. 1, Tris-EDTA,pH9.0 was used for antigen retrieval. 2 Antibody was diluted at 1:200(4° overnight).3,Secondary antibody was diluted at 1:200(room temperature, 45min).