

CPO Polyclonal Antibody

Catalog No :	YT6243
Reactivity :	Human
Applications :	IHC;ELISA
Target :	CPO
Gene Name :	CPO
Protein Name :	CPO
Human Gene Id :	130749
Human Swiss Prot No :	Q8IVL8
Immunogen :	Synthesized peptide derived from human CPO AA range: 50-100
Specificity :	This antibody detects endogenous levels of human CPO
Formulation :	Liquid in PBS containing 50% glycerol, 0.5% BSA and 0.02% sodium azide.
Source :	Polyclonal, Rabbit,IgG
Dilution :	IHC 1:50-200, ELISA(peptide)1:5000-20000
Purification :	The antibody was affinity-purified from rabbit antiserum by affinity-chromatography using epitope-specific immunogen.
Concentration :	1 mg/ml
Storage Stability :	-15°C to -25°C/1 year(Do not lower than -25°C)
Background :	carboxypeptidase O(CPO) Homo sapiens This gene is a member of the metallocarboxypeptidase gene family. [provided by RefSeq, Jan 2011],
Function :	cofactor: Binds 1 zinc ion per subunit.,function: Probable carboxypeptidase which may cleave proteins with C-terminal acidic residues.,similarity: Belongs to the

peptidase M14 family.,

Subcellular Location : Apical cell membrane ; Lipid-anchor, GPI-anchor .

Expression : Detected in enterocytes of the ileum.

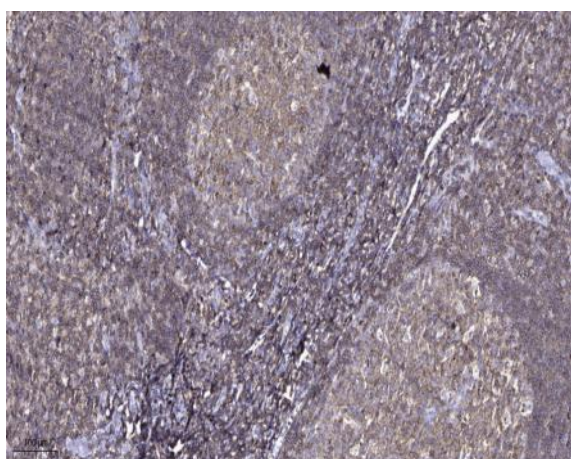
Sort : 4515

No4 : 1

Host : Rabbit

Modifications : Unmodified

Products Images



Immunohistochemical analysis of paraffin-embedded human tonsil. 1, Antibody was diluted at 1:200(4° overnight). 2, Tris-EDTA,pH9.0 was used for antigen retrieval. 3,Secondary antibody was diluted at 1:200(room temperature, 45min).