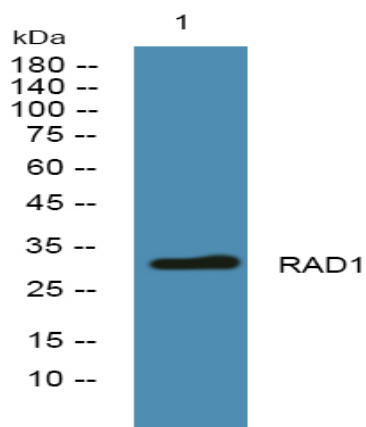


RAD1 Polyclonal Antibody

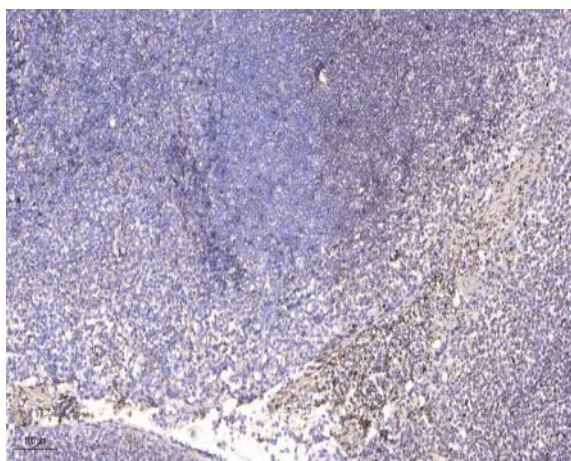
Catalog No :	YT6220
Reactivity :	Human;Mouse
Applications :	IHC;IF;WB
Target :	RAD1
Fields :	>>Cellular senescence
Gene Name :	RAD1 REC1
Protein Name :	RAD1
Human Gene Id :	5810
Human Swiss Prot No :	O60671
Immunogen :	Synthesized peptide derived from human RAD1
Specificity :	This antibody detects endogenous levels of human RAD1
Formulation :	Liquid in PBS containing 50% glycerol, 0.5% BSA and 0.02% sodium azide.
Source :	Polyclonal, Rabbit,IgG
Dilution :	IHC 1:50-200, WB 1:500-2000. IF 1:50-200
Purification :	The antibody was affinity-purified from rabbit antiserum by affinity-chromatography using epitope-specific immunogen.
Concentration :	1 mg/ml
Storage Stability :	-15°C to -25°C/1 year(Do not lower than -25°C)
Observed Band :	32kD

Background :	<p>This gene encodes a component of a heterotrimeric cell cycle checkpoint complex, known as the 9-1-1 complex, that is activated to stop cell cycle progression in response to DNA damage or incomplete DNA replication. The 9-1-1 complex is recruited by RAD17 to affected sites where it may attract specialized DNA polymerases and other DNA repair effectors. Alternatively spliced transcript variants of this gene have been described. [provided by RefSeq, Jan 2009],</p>
Function :	<p>catalytic activity:Exonucleolytic cleavage in the 3'- to 5'-direction to yield nucleoside 5'-phosphates.,function:Component of the 9-1-1 cell-cycle checkpoint response complex that plays a major role in DNA repair. The 9-1-1 complex is recruited to DNA lesion upon damage by the RAD17-replication factor C (RFC) clamp loader complex. Acts then as a sliding clamp platform on DNA for several proteins involved in long-patch base excision repair (LP-BER). The 9-1-1 complex stimulates DNA polymerase beta (POLB) activity by increasing its affinity for the 3'-OH end of the primer-template and stabilizes POLB to those sites where LP-BER proceeds; endonuclease FEN1 cleavage activity on substrates with double, nick, or gap flaps of distinct sequences and lengths; and DNA ligase I (LIG1) on long-patch base excision repair substrates. Isoform 1 possesses 3'->5' double stranded DNA exonuclease activity</p>
Subcellular Location :	<p>Nucleus .</p>
Expression :	<p>Expressed in testis, uterus, bladder, spleen, ovaries, lung, brain and muscle (at protein level).</p>
Sort :	<p>13740</p>
No4 :	<p>1</p>
Host :	<p>Rabbit</p>
Modifications :	<p>Unmodified</p>

Products Images



Western blot analysis of lysates from PC12 cells, primary antibody was diluted at 1:1000, 4° over night



Immunohistochemical analysis of paraffin-embedded human tonsil. 1, Antibody was diluted at 1:200(4° overnight). 2, Tris-EDTA,pH9.0 was used for antigen retrieval. 3,Secondary antibody was diluted at 1:200(room temperature, 45min).