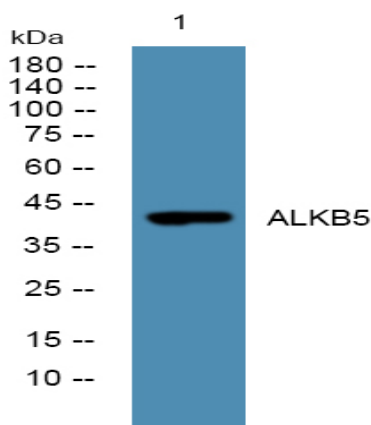


## ALKBH5 Polyclonal Antibody

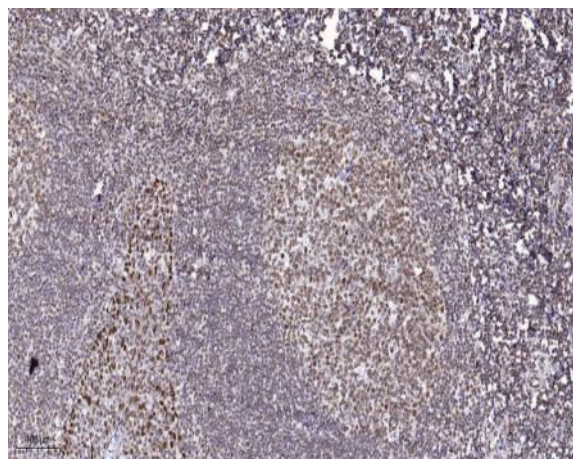
<b>Catalog No :</b>	YT6218
<b>Reactivity :</b>	Human;Mouse
<b>Applications :</b>	IHC;IF;WB
<b>Target :</b>	ALKBH5
<b>Gene Name :</b>	ALKBH5 ABH5 OFOXD1
<b>Protein Name :</b>	ALKBH5
<b>Human Gene Id :</b>	54890
<b>Human Swiss Prot No :</b>	Q6P6C2
<b>Immunogen :</b>	Synthesized peptide derived from human ALKBH5
<b>Specificity :</b>	This antibody detects endogenous levels of human ALKBH5
<b>Formulation :</b>	Liquid in PBS containing 50% glycerol, 0.5% BSA and 0.02% sodium azide.
<b>Source :</b>	Polyclonal, Rabbit,IgG
<b>Dilution :</b>	IHC 1:50-200, WB 1:500-2000. IF 1:50-200
<b>Purification :</b>	The antibody was affinity-purified from rabbit antiserum by affinity-chromatography using epitope-specific immunogen.
<b>Concentration :</b>	1 mg/ml
<b>Storage Stability :</b>	-15°C to -25°C/1 year(Do not lower than -25°C)
<b>Observed Band :</b>	51kD
<b>Background :</b>	similarity:Belongs to the alkB family.,

<b>Function :</b>	similarity:Belongs to the alkB family.,
<b>Subcellular Location :</b>	Nucleus speckle .
<b>Expression :</b>	Widely expressed, with highest expression in lung, followed by testis, pancreas, spleen and ovary.
<b>Tag :</b>	orthogonal
<b>Sort :</b>	1
<b>No4 :</b>	1
<b>Host :</b>	Rabbit
<b>Modifications :</b>	Unmodified

## Products Images



Western blot analysis of lysates from SW480 cells, primary antibody was diluted at 1:1000, 4° over night



Immunohistochemical analysis of paraffin-embedded human tonsil. 1, Antibody was diluted at 1:200(4° overnight). 2, Tris-EDTA,pH9.0 was used for antigen retrieval. 3,Secondary antibody was diluted at 1:200(room temperature, 45min).