

## CTGF Polyclonal Antibody

<b>Catalog No :</b>	YT6207
<b>Reactivity :</b>	Human;Mouse;Rat
<b>Applications :</b>	IHC;IF;WB
<b>Target :</b>	CTGF
<b>Fields :</b>	>>Apelin signaling pathway;>>Hippo signaling pathway
<b>Gene Name :</b>	CTGF CCN2 HCS24 IGFBP8
<b>Protein Name :</b>	CTGF
<b>Human Gene Id :</b>	1490
<b>Human Swiss Prot No :</b>	P29279
<b>Immunogen :</b>	Synthesized peptide derived from human CTGF AA range: 130-210
<b>Specificity :</b>	This antibody detects endogenous levels of human CTGF
<b>Formulation :</b>	Liquid in PBS containing 50% glycerol, 0.5% BSA and 0.02% sodium azide.
<b>Source :</b>	Polyclonal, Rabbit,IgG
<b>Dilution :</b>	IHC 1:50-200, WB 1:500-2000. IF 1:50-200
<b>Purification :</b>	The antibody was affinity-purified from rabbit antiserum by affinity-chromatography using epitope-specific immunogen.
<b>Concentration :</b>	1 mg/ml
<b>Storage Stability :</b>	-15°C to -25°C/1 year(Do not lower than -25°C)
<b>Observed Band :</b>	37kD

**Background :** The protein encoded by this gene is a mitogen that is secreted by vascular endothelial cells. The encoded protein plays a role in chondrocyte proliferation and differentiation, cell adhesion in many cell types, and is related to platelet-derived growth factor. Certain polymorphisms in this gene have been linked with a higher incidence of systemic sclerosis. [provided by RefSeq, Nov 2009],

**Function :** function:Major connective tissue mitogen secreted by vascular endothelial cells. Promotes proliferation and differentiation of chondrocytes. Mediates heparin- and divalent cation-dependent cell adhesion in many cell types including fibroblasts, myofibroblasts, endothelial and epithelial cells. Enhances fibroblast growth factor-induced DNA synthesis.,similarity:Belongs to the CCN family.,similarity:Contains 1 CTCK (C-terminal cystine knot-like) domain.,similarity:Contains 1 IGFBP N-terminal domain.,similarity:Contains 1 TSP type-1 domain.,similarity:Contains 1 VWFC domain.,subunit:Monomer.,

**Subcellular Location :** Secreted, extracellular space, extracellular matrix . Secreted .

**Expression :** Expressed in bone marrow and thymic cells. Also expressed one of two Wilms tumors tested.

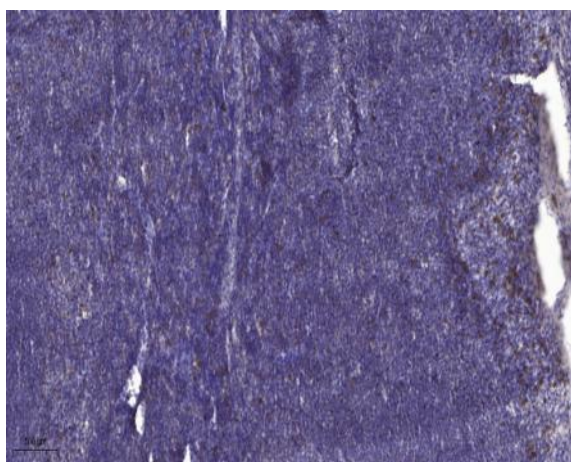
**Sort :** 1

**No4 :** 1

**Host :** Rabbit

**Modifications :** Unmodified

## Products Images



Immunohistochemical analysis of paraffin-embedded human tonsil. 1, Antibody was diluted at 1:200(4° overnight). 2, Tris-EDTA,pH9.0 was used for antigen retrieval. 3,Secondary antibody was diluted at 1:200(room temperature, 30min).