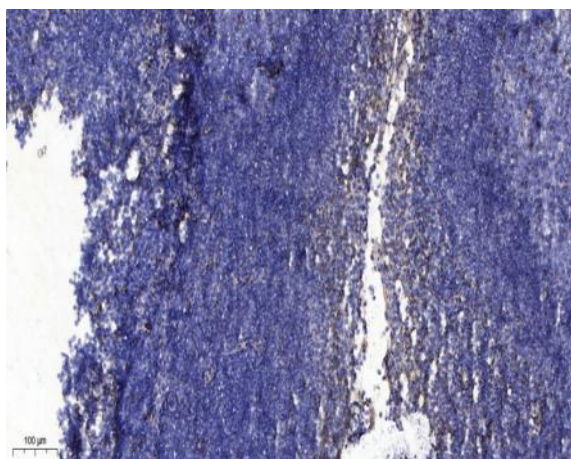


Secretogranin-1 Polyclonal Antibody

Catalog No :	YT6192
Reactivity :	Human;Mouse;Rat
Applications :	IHC;IF;WB
Target :	Secretogranin-1
Gene Name :	CHGB SCG1
Protein Name :	Secretogranin-1
Human Gene Id :	1114
Human Swiss Prot No :	P05060
Immunogen :	Synthesized peptide derived from human Secretogranin-1
Specificity :	This antibody detects endogenous levels of human Secretogranin-1
Formulation :	Liquid in PBS containing 50% glycerol, 0.5% BSA and 0.02% sodium azide.
Source :	Polyclonal, Rabbit,IgG
Dilution :	IHC 1:50-200, WB 1:500-2000. IF 1:50-200
Purification :	The antibody was affinity-purified from rabbit antiserum by affinity-chromatography using epitope-specific immunogen.
Concentration :	1 mg/ml
Storage Stability :	-15°C to -25°C/1 year(Do not lower than -25°C)
Observed Band :	78kD
Background :	This gene encodes a tyrosine-sulfated secretory protein abundant in peptidergic endocrine cells and neurons. This protein may serve as a precursor for regulatory peptides. [provided by RefSeq, Jan 2009],

Function :	function:Secretogranin-1 is a neuroendocrine secretory granule protein, which may be the precursor for other biologically active peptides.,PTM:Extensively processed by limited proteolysis at conserved basic residues. Alternative processing are seen in different tissues.,similarity:Belongs to the chromogranin/secretogranin protein family.,subcellular location:Neuroendocrine and endocrine secretory granules.,tissue specificity:Expressed in the adrenal medulla, and in pheochromocytoma. Not expressed in liver.,
Subcellular Location :	Secreted. Neuroendocrine and endocrine secretory granules.
Expression :	Expressed in the adrenal medulla, and in pheochromocytoma. Not expressed in liver.
Sort :	16206
No4 :	1
Host :	Rabbit
Modifications :	Unmodified

Products Images



Immunohistochemical analysis of paraffin-embedded human tonsil. 1, Antibody was diluted at 1:200(4° overnight). 2, Tris-EDTA,pH9.0 was used for antigen retrieval. 3,Secondary antibody was diluted at 1:200(room temperature, 30min).