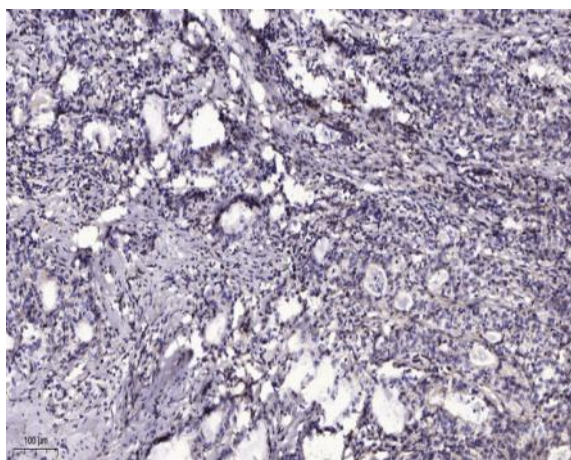


## CCD19 Polyclonal Antibody

<b>Catalog No :</b>	YT6177
<b>Reactivity :</b>	Human;Mouse
<b>Applications :</b>	IHC;IF;WB
<b>Target :</b>	CCD19
<b>Gene Name :</b>	CCDC19 NESG1
<b>Protein Name :</b>	CCD19
<b>Human Gene Id :</b>	25790
<b>Human Swiss Prot No :</b>	Q9UL16
<b>Immunogen :</b>	Synthesized peptide derived from human CCD19
<b>Specificity :</b>	This antibody detects endogenous levels of human CCD19
<b>Formulation :</b>	Liquid in PBS containing 50% glycerol, 0.5% BSA and 0.02% sodium azide.
<b>Source :</b>	Polyclonal, Rabbit,IgG
<b>Dilution :</b>	IHC 1:50-200, WB 1:500-2000. IF 1:50-200
<b>Purification :</b>	The antibody was affinity-purified from rabbit antiserum by affinity-chromatography using epitope-specific immunogen.
<b>Concentration :</b>	1 mg/ml
<b>Storage Stability :</b>	-15°C to -25°C/1 year(Do not lower than -25°C)
<b>Observed Band :</b>	60kD
<b>Background :</b>	tissue specificity:Expressed in nasopharyngeal epithelium and trachea but not in esophagus, stomach, large intestine, liver, cerebrum, heart, bladder, kidney, thymus, or lung.,

<b>Function :</b>	tissue specificity:Expressed in nasopharyngeal epithelium and trachea but not in esophagus, stomach, large intestine, liver, cerebrum, heart, bladder, kidney, thymus, or lung.,
<b>Subcellular Location :</b>	Cytoplasm, cytoskeleton, cilium axoneme . Cytoplasm, cytoskeleton, flagellum axoneme . Located in the proximal region of respiratory cilia. .
<b>Expression :</b>	Expressed in respiratory cells and in sperm (at protein level) (PubMed:33139725). Expressed in nasopharyngeal epithelium and trachea (PubMed:10524255).
<b>Sort :</b>	3305
<b>No4 :</b>	1
<b>Host :</b>	Rabbit
<b>Modifications :</b>	Unmodified

## Products Images



Immunohistochemical analysis of paraffin-embedded human Gastric adenocarcinoma. 1, Antibody was diluted at 1:200(4° overnight). 2, Tris-EDTA,pH9.0 was used for antigen retrieval. 3,Secondary antibody was diluted at 1:200(room temperature, 45min).