

CD108 Polyclonal Antibody

Catalog No :	YT5926
Reactivity :	Human;Mouse;Rat
Applications :	IHC;IF;ELISA
Target :	CD108
Fields :	>>Axon guidance
Gene Name :	SEMA7A CD108 SEMAL
Protein Name :	Semaphorin-7A (CDw108) (JMH blood group antigen) (John-Milton-Hargen human blood group Ag) (Semaphorin-K1) (Sema K1) (Semaphorin-L) (Sema L) (CD antigen CD108)
Human Gene Id :	8482
Human Swiss Prot No :	O75326
Mouse Gene Id :	20361
Mouse Swiss Prot No :	Q9QUR8
Immunogen :	Synthetic peptide from human protein at AA range: 101-150
Specificity :	The antibody detects endogenous CD108
Formulation :	Liquid in PBS containing 50% glycerol, 0.5% BSA and 0.02% sodium azide.
Source :	Polyclonal, Rabbit,IgG
Dilution :	IHC 1:50-200, ELISA 1:10000-20000. IF 1:50-200
Purification :	The antibody was affinity-purified from rabbit antiserum by affinity-chromatography using epitope-specific immunogen.
Concentration :	1 mg/ml

Storage Stability : -15°C to -25°C/1 year(Do not lower than -25°C)

Cell Pathway : Axon guidance;

Background : This gene encodes a member of the semaphorin family of proteins. The encoded preproprotein is proteolytically processed to generate the mature glycosylphosphatidylinositol (GPI)-anchored membrane glycoprotein. The encoded protein is found on activated lymphocytes and erythrocytes and may be involved in immunomodulatory and neuronal processes. The encoded protein carries the John Milton Hagen (JMH) blood group antigens. Mutations in this gene may be associated with reduced bone mineral density (BMD). Alternative splicing results in multiple transcript variants, at least one of which encodes an isoform that is proteolytically processed. [provided by RefSeq, Feb 2016],

Function : function:May play an important role in the nervous system and in modulating immune function.,online information:Blood group antigen gene mutation database,similarity:Belongs to the semaphorin family.,similarity:Contains 1 Ig-like C2-type (immunoglobulin-like) domain.,similarity:Contains 1 PSI domain.,similarity:Contains 1 Sema domain.,tissue specificity:Expressed in placenta, testis, ovary, spleen, brain, spinal chord, lung, heart, adrenal gland, lymph nodes, thymus, intestine and kidney.,

Subcellular Location : Cell membrane ; Lipid-anchor, GPI-anchor ; Extracellular side . Detected in a punctate pattern on the cell membrane of basal and supra-basal skin keratinocytes.

Expression : Detected in skin keratinocytes and on endothelial cells from skin blood vessels (at protein level). Expressed in fibroblasts, keratinocytes, melanocytes, placenta, testis, ovary, spleen, brain, spinal chord, lung, heart, adrenal gland, lymph nodes, thymus, intestine and kidney.

Tag : hot

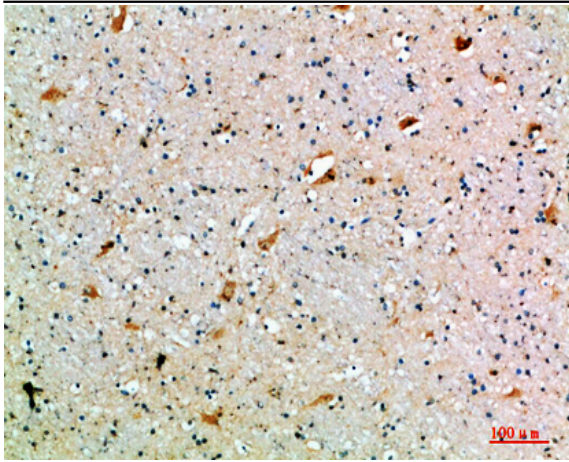
Sort : 3363

No4 : 1

Host : Rabbit

Modifications : Unmodified

Products Images



Immunohistochemical analysis of paraffin-embedded human-brain, antibody was diluted at 1:200