

PLD4 Polyclonal Antibody

Catalog No :	YT6153
Reactivity :	Human;Mouse;Rat
Applications :	WB;IHC
Target :	PLD4
Fields :	>>Glycerophospholipid metabolism;>>Ether lipid metabolism;>>Metabolic pathways
Gene Name :	PLD4 C14orf175 UNQ2488/PRO5775
Protein Name :	Phospholipase D4 (PLD 4) (EC 3.1.4.4) (Choline phosphatase 4) (Phosphatidylcholine-hydrolyzing phospholipase D4)
Human Gene Id :	122618
Human Swiss Prot No :	Q96BZ4
Mouse Gene Id :	104759
Mouse Swiss Prot No :	Q8BG07
Immunogen :	Synthesized peptide derived from human PLD4 Polyclonal
Specificity :	This antibody detects endogenous levels of PLD4.
Formulation :	Liquid in PBS containing 50% glycerol, 0.5% BSA and 0.02% sodium azide.
Source :	Polyclonal, Rabbit,IgG
Dilution :	WB 1:500-2000;IHC 1:50-300
Purification :	The antibody was affinity-purified from rabbit antiserum by affinity-chromatography using epitope-specific immunogen.
Concentration :	1 mg/ml

Storage Stability : -15°C to -25°C/1 year(Do not lower than -25°C)

Observed Band : 55kD

Background : catalytic activity:A phosphatidylcholine + H(2)O = choline + a phosphatidate.,similarity:Belongs to the phospholipase D family.,similarity:Contains 2 PLD phosphodiesterase domains.,

Function : catalytic activity:A phosphatidylcholine + H(2)O = choline + a phosphatidate.,similarity:Belongs to the phospholipase D family.,similarity:Contains 2 PLD phosphodiesterase domains.,

Subcellular Location : Endoplasmic reticulum membrane ; Single-pass type II membrane protein . Golgi apparatus, trans-Golgi network membrane ; Single-pass type II membrane protein . Nucleus . Early endosome . Cytoplasmic vesicle, phagosome . Activation of microglia induces translocation of PLD4 from the nucleus to the phagosomes. .

Expression : B-cell,T-cell,

Tag : hot

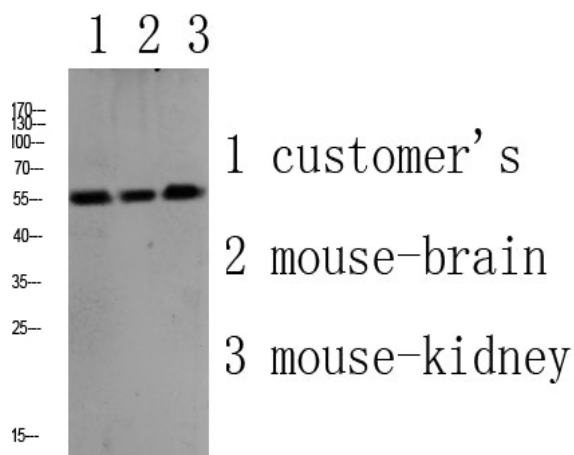
Sort : 12835

No4 : 1

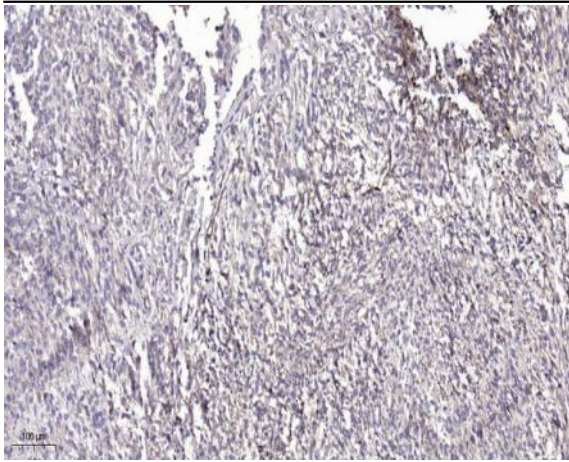
Host : Rabbit

Modifications : Unmodified

Products Images



Western blot analysis of various lysate, antibody was diluted at 1000. Secondary antibody(catalog#:RS0002) was diluted at 1:20000



Immunohistochemical analysis of paraffin-embedded human Colon cancer. 1, Antibody was diluted at 1:200(4° overnight). 2, Tris-EDTA,pH9.0 was used for antigen retrieval. 3,Secondary antibody was diluted at 1:200(room temperature, 45min).