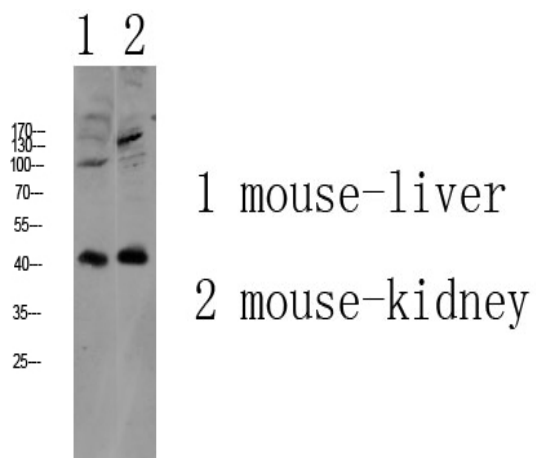


## AGTR1 Polyclonal Antibody

<b>Catalog No :</b>	YT6157
<b>Reactivity :</b>	Human;Mouse;Rat
<b>Applications :</b>	WB;ELISA
<b>Target :</b>	AGTR1
<b>Fields :</b>	>>Calcium signaling pathway;>>cGMP-PKG signaling pathway;>>Phospholipase D signaling pathway;>>Neuroactive ligand-receptor interaction;>>Adrenergic signaling in cardiomyocytes;>>Vascular smooth muscle contraction;>>Apelin signaling pathway;>>Renin-angiotensin system;>>Renin secretion;>>Aldosterone synthesis and secretion;>>Cortisol synthesis and secretion;>>AGE-RAGE signaling pathway in diabetic complications;>>Cushing syndrome;>>Coronavirus disease - COVID-19;>>Pathways in cancer;>>Diabetic cardiomyopathy
<b>Gene Name :</b>	AGTR1 AGTR1A AGTR1B AT2R1 AT2R1B
<b>Protein Name :</b>	Type-1 angiotensin II receptor (AT1AR) (AT1BR) (Angiotensin II type-1 receptor) (AT1)
<b>Human Gene Id :</b>	185
<b>Human Swiss Prot No :</b>	P30556
<b>Immunogen :</b>	Synthesized peptide derived from human AGTR1 Polyclonal
<b>Specificity :</b>	This antibody detects endogenous levels of AGTR1.
<b>Formulation :</b>	Liquid in PBS containing 50% glycerol, 0.5% BSA and 0.02% sodium azide.
<b>Source :</b>	Polyclonal, Rabbit,IgG
<b>Dilution :</b>	WB 1:500-2000, ELISA 1:10000-20000
<b>Purification :</b>	The antibody was affinity-purified from rabbit antiserum by affinity-chromatography using epitope-specific immunogen.

<b>Concentration :</b>	1 mg/ml
<b>Storage Stability :</b>	-15°C to -25°C/1 year(Do not lower than -25°C)
<b>Observed Band :</b>	41kD
<b>Cell Pathway :</b>	Calcium;Neuroactive ligand-receptor interaction;Vascular smooth muscle contraction;Renin-angiotensin system;
<b>Background :</b>	Angiotensin II is a potent vasopressor hormone and a primary regulator of aldosterone secretion. It is an important effector controlling blood pressure and volume in the cardiovascular system. It acts through at least two types of receptors. This gene encodes the type 1 receptor which is thought to mediate the major cardiovascular effects of angiotensin II. This gene may play a role in the generation of reperfusion arrhythmias following restoration of blood flow to ischemic or infarcted myocardium. It was previously thought that a related gene, denoted as AGTR1B, existed; however, it is now believed that there is only one type 1 receptor gene in humans. Multiple alternatively spliced transcript variants have been reported for this gene. [provided by RefSeq, Jul 2012],
<b>Function :</b>	disease:Defects in AGTR1 are a cause of renal tubular dysgenesis (RTD) [MIM:267430]. RTD is an autosomal recessive severe disorder of renal tubular development characterized by persistent fetal anuria and perinatal death, probably due to pulmonary hypoplasia from early-onset oligohydramnios (the Potter phenotype).,function:Receptor for angiotensin II. Mediates its action by association with G proteins that activate a phosphatidylinositol-calcium second messenger system.,online information:Angiotensin receptor entry,online information:The Singapore human mutation and polymorphism database,PTM:C-terminal Ser or Thr residues may be phosphorylated.,similarity:Belongs to the G-protein coupled receptor 1 family.,tissue specificity:Liver, lung, adrenal and adrenocortical adenomas.,
<b>Subcellular Location :</b>	Cell membrane ; Multi-pass membrane protein .
<b>Expression :</b>	Liver, lung, adrenal and adrenocortical adenomas.
<b>Tag :</b>	orthogonal
<b>Sort :</b>	1795
<b>No4 :</b>	1
<b>Host :</b>	Rabbit
<b>Modifications :</b>	Unmodified

## Products Images



Western blot analysis of various lysate, antibody was diluted at 1000. Secondary antibody(catalog#:RS0002) was diluted at 1:20000