

RPL35 Polyclonal Antibody

Catalog No :	YT6147
Reactivity :	Human;Mouse;Rat
Applications :	WB;ELISA
Target :	Ribosomal Protein L35
Fields :	>>Ribosome;>>Coronavirus disease - COVID-19
Gene Name :	RPL35
Protein Name :	60S ribosomal protein L35
Human Gene Id :	11224
Human Swiss Prot No :	P42766
Mouse Gene Id :	66489
Mouse Swiss Prot No :	Q6ZWW7
Rat Gene Id :	296709
Rat Swiss Prot No :	P17078
Immunogen :	Synthesized peptide derived from human RPL35 Polyclonal
Specificity :	This antibody detects endogenous levels of RPL35.
Formulation :	Liquid in PBS containing 50% glycerol, 0.5% BSA and 0.02% sodium azide.
Source :	Polyclonal, Rabbit,IgG
Dilution :	WB 1:500-2000, ELISA 1:10000-20000
Purification :	The antibody was affinity-purified from rabbit antiserum by affinity-

chromatography using epitope-specific immunogen.

Concentration : 1 mg/ml

Storage Stability : -15°C to -25°C/1 year(Do not lower than -25°C)

Observed Band : 16kD

Cell Pathway : Ribosome;

Background : Ribosomes, the organelles that catalyze protein synthesis, consist of a small 40S subunit and a large 60S subunit. Together these subunits are composed of 4 RNA species and approximately 80 structurally distinct proteins. This gene encodes a ribosomal protein that is a component of the 60S subunit. The protein belongs to the L29P family of ribosomal proteins. It is located in the cytoplasm. As is typical for genes encoding ribosomal proteins, there are multiple processed pseudogenes of this gene dispersed through the genome. [provided by RefSeq, Jul 2008],

Function : similarity:Belongs to the ribosomal protein L29P family.,

Subcellular Location : nucleolus,cytoplasm,cytosol,ribosome,membrane,cytosolic large ribosomal subunit,

Expression : Brain,Lung,Muscle,Prostate,

Tag : hot

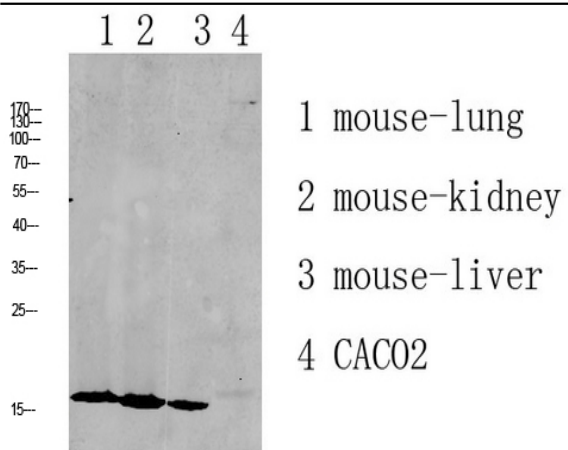
Sort : 14605

No4 : 1

Host : Rabbit

Modifications : Unmodified

Products Images



Western blot analysis of various lysate, antibody was diluted at 1000. Secondary antibody(catalog#:RS0002) was diluted at 1:20000