

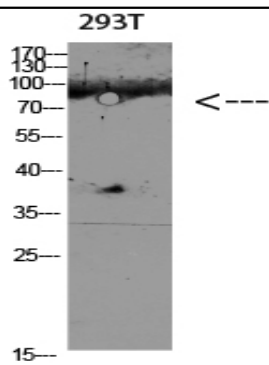
## CD168 Polyclonal Antibody

<b>Catalog No :</b>	YT5887
<b>Reactivity :</b>	Human;Rat;Mouse;
<b>Applications :</b>	WB;IHC;IF;ELISA
<b>Target :</b>	CD168
<b>Fields :</b>	>>ECM-receptor interaction
<b>Gene Name :</b>	HMMR IHABP RHAMM
<b>Protein Name :</b>	Hyaluronan mediated motility receptor (Intracellular hyaluronic acid-binding protein) (Receptor for hyaluronan-mediated motility) (CD antigen CD168)
<b>Human Gene Id :</b>	3161
<b>Human Swiss Prot No :</b>	O75330
<b>Mouse Gene Id :</b>	15366
<b>Mouse Swiss Prot No :</b>	Q00547
<b>Immunogen :</b>	Synthetic peptide from human protein at AA range: 280-340
<b>Specificity :</b>	The antibody detects endogenous CD168
<b>Formulation :</b>	Liquid in PBS containing 50% glycerol, 0.5% BSA and 0.02% sodium azide.
<b>Source :</b>	Polyclonal, Rabbit,IgG
<b>Dilution :</b>	WB 1:500-2000,IHC 1:500-200, ELISA 1:10000-20000. IF 1:50-200
<b>Purification :</b>	The antibody was affinity-purified from rabbit antiserum by affinity-chromatography using epitope-specific immunogen.
<b>Concentration :</b>	1 mg/ml

---

<b>Storage Stability :</b>	<u>-15°C to -25°C/1 year(Do not lower than -25°C)</u>
<b>Observed Band :</b>	<u>84kD</u>
<b>Cell Pathway :</b>	<u>ECM-receptor interaction;</u>
<b>Background :</b>	<u>The protein encoded by this gene is involved in cell motility. It is expressed in breast tissue and together with other proteins, it forms a complex with BRCA1 and BRCA2, thus is potentially associated with higher risk of breast cancer. Alternatively spliced transcript variants encoding different isoforms have been noted for this gene. [provided by RefSeq, Dec 2008],</u>
<b>Function :</b>	<u>function:Involved in cell motility. When hyaluronan binds to HMMR, the phosphorylation of a number of proteins, including the focal adhesion kinase occurs. May also be involved in cellular transformation and metastasis formation, and in regulating extracellular-regulated kinase (ERK) activity.,subunit:Subunit of the HARC complex.,tissue specificity:Expressed in breast cancer cell lines and in normal breast tissue.,</u>
<b>Subcellular Location :</b>	<u>Cell surface . Cytoplasm . Cytoplasm, cytoskeleton, spindle .</u>
<b>Expression :</b>	<u>Expressed in testis (PubMed:22965910). Expressed in the breast (PubMed:8890751).</u>
<b>Tag :</b>	<u>orthogonal</u>
<b>Sort :</b>	<u>3424</u>
<b>No4 :</b>	<u>1</u>
<b>Host :</b>	<u>Rabbit</u>
<b>Modifications :</b>	<u>Unmodified</u>

## Products Images



Western blot analysis of 293T lysate, antibody was diluted at 1000. Secondary antibody(catalog#:RS0002) was diluted at 1:20000